



SCHEDULES OF FREIGHT TRAINS

*Carrying Fruits
and Vegetables*

FROM

Chicago, East St. Louis, Logansport,
Effner and Cincinnati

TO

Principal Points Reached by or via
The Pennsylvania Railroad
January, 1950



SCHEDULES OF FREIGHT TRAINS

*Carrying Fruits
and Vegetables*

FROM

Chicago, East St. Louis, Logansport,
Effner and Cincinnati

TO

Principal Points Reached by or via
The Pennsylvania Railroad
January, 1950

**PENNSYLVANIA
RAILROAD**

**PENNSYLVANIA
RAILROAD**



In the Pennsylvania's non-electrified territory these new giant Diesel-electric locomotives speed perishables to market.

PENNSYLVANIA RAILROAD FRESH FRUIT AND VEGETABLE FREIGHT SERVICE

The Pennsylvania Railroad serves directly an area comprising approximately 40% of the population of the United States. No other rail line serves so many important fresh fruit and fresh vegetable markets in the Central and Eastern territories. Here are located industrialized territories where comparatively small percentages of these commodities are produced. No matter where your farm, ranch, orchard, or grove may be located, you can market your production in this great consuming area via the Pennsylvania Railroad Company's facilities which provide services unexcelled.

With modern equipment—including the nation's largest private communications system of teletypewriters, telegraph, and telephones, daily passing reports are made at all important terminal and division points and distributed to freight traffic representatives located at seventy-six convenient cities throughout the United States, Canada, and Mexico, the Pennsylvania Railroad offers the produce trade a flexibility and opportunity for the diversion of cars not elsewhere available.

This pamphlet has been published to assist you in planning your shipping schedules.

TABLE OF CONTENTS

PAGE

- 1—Pennsylvania Railroad offices in Western and Southern Fruit and Vegetable Producing Areas.
- 2—Scheduled services from Chicago, Ill.
- 4—Scheduled services from East St. Louis, Ill.
- 7—Scheduled services from Effner, Ind. and Logansport, Ind.
- 10—Scheduled services from Cincinnati, Ohio.
- 11—Explanation of Reference Marks.
- 12-13—Map—Pennsylvania Railroad System.
- 14—Closing hours for receipt of Perishable Freight from Connecting Lines.
- 15—Description of Principal Produce Terminals.
- 18—Closing hours for acceptance of Reconsignment orders for cars on hand at stations listed.
- 21—Cold Storage Warehouses in territory served by the Pennsylvania Railroad.
- 23—List of Pennsylvania Railroad icing stations.
- 25—Pennsylvania Railroad Freight Traffic Representatives.

The Pennsylvania Railroad has for many years specialized in the handling of fresh Fruits and Vegetables originating in the West and South, and maintains the following offices in the Fruit and Vegetable producing areas, equipped to serve its patrons efficiently.

B. D. RHODES, *Pacific Coast Freight Traffic Manager*
1000 Monadnock Building, San Francisco 5, Calif.
Tel., GARfield 1-5093

E. W. FISHER, *Southwestern Freight Traffic Manager*
1000 Syndicate Trust Building—915 Olive St.
St. Louis 1, Mo. Tel., Main 3200

A. S. JENNINGS, *Western Freight Traffic Manager*
632 Union Station—516 West Jackson Blvd.
Chicago 6, Ill. Tel., CENTral 7200

BIRMINGHAM 3, ALABAMA H. M. MORTON, <i>Dist. Frt. Agt.</i>	803 Watts Bldg., 2008 3rd Ave., North • W. J. GANDOLFO, <i>Traveling Freight Agt.</i> • J. A. FITZGERALD, <i>Trav. Frt. Agt.</i>	Tel. 7-4523
DALLAS 1, TEXAS THOMAS WATERS, <i>District Freight Agent</i>	1307 Southwestern Life Bldg., 1506 Main Street CHRIST BODENSTEINER, <i>Traveling Freight Agent</i>	Tel. Central 9303
DENVER 2, COLORADO O. J. BOEHM, <i>District Freight Agent</i>	921 U. S. National Bank Bldg., 817 17th Street F. J. BELOT, <i>Traveling Freight Agent</i>	Tel. Main 4198
HOUSTON 2, TEXAS H. A. ROSYNECK, <i>District Freight Agent</i>	712-13 Bankers Mortgage Bldg., 708 Main St. C. W. LINNETT, <i>Traveling Freight Agent</i>	Tel. Preston 3117
KANSAS CITY 6, MISSOURI L. H. DICKMAN, <i>District Freight Agent</i> IRVIN SCHNEEBERG, <i>Traveling Freight Agent</i>	536 Railway Exchange Bldg., 7th and Walnut Sts. F. J. POLEK, <i>Traveling Freight Agent</i> C. F. WIDMAYER, <i>Freight Representative</i>	Tel. Harrison 8080
LOS ANGELES 14, CALIFORNIA E. R. NORRIS, <i>District Freight Agent</i> R. G. TUMMEL, <i>Traveling Freight Agent</i>	318 Van Nuys Bldg., 210 W. 7th Street L. P. COUFFER, <i>Traveling Freight Agent</i> T. E. ROHAN, <i>Traveling Freight Agent</i> H. C. KOVERMAN, <i>Freight Representative</i>	Tel. TRinity 7793
MEMPHIS 3, TENNESSEE A. J. GARIBALDI, <i>District Freight & Passenger Agent</i>	424 Memphis Cotton Exchange Bldg., 67 Union Ave. L. J. LOGSDON, <i>Traveling Freight & Passenger Agent</i>	Tel. 8-3035
MILWAUKEE 2, WISCONSIN D. J. BUTLER, <i>District Freight Agent</i> W. A. EVERS, <i>Traveling Freight Agent</i>	1410 First Wisconsin Bank Bldg., 735 Water St. L. C. JOHNSON, <i>Traveling Freight Agent</i> WALTER FOLORON, <i>Traveling Freight Agent</i> G. D. KROMER, <i>Traveling Freight Agent</i> C. D. KISE, <i>Freight Representative</i>	Tel. DALy 4850
MINNEAPOLIS 2, MINNESOTA W. R. MCAFEE, <i>District Freight Agent</i> R. W. DALE, <i>Traveling Freight Agent</i>	720 Rand Tower, Marquette Ave., 6th St. South R. H. BAILEY, <i>Traveling Freight Agent</i> J. V. DELANEY, <i>Freight Representative</i> W. M. WALKER, <i>Traveling Freight Agent</i> H. W. HANSTEIN, <i>Traveling Freight Agent</i>	Tel. ATLantic 5367
NASHVILLE 3, TENNESSEE D. M. CLARK, <i>District Freight Agent</i>	1013 Stahlman Bldg., Union St. & Third Ave., N.	Tel. 6-8284
NEW ORLEANS 12, LOUISIANA G. F. BERKEMER, <i>District Frt. & Passenger Agent</i>	1237 Canal Bldg., 210 Baronne St. R. J. GANDOLFO, <i>Trav. Frt. & Pass. Agt.</i> T. J. DUGAN, <i>Trav. Frt. Agt.</i>	Tel. RAymond 0477
OMAHA 2, NEBRASKA H. W. JOHNSON, <i>District Freight Agent</i>	1219 City National Bank Bldg., 16th & Harney Sts. M. E. ROOD, <i>Traveling Freight Agent</i>	Tel. ATLantic 9427
PHOENIX, ARIZONA T. A. METZGER, <i>District Freight & Passenger Agent</i>	601 Security Bldg., 234 N. Central Ave. W. J. WOODS, <i>Traveling Freight & Passenger Agent</i>	Tel. 4-1514
PORTLAND 4, OREGON T. A. PRECHT, <i>District Freight Agent</i>	545 Pacific Bldg., 520 S.W. Yamhill St. L. F. BOIVIN, <i>Traveling Frt. & Passenger Agent</i> B. E. BRUMETT, <i>Traveling Frt. Agt.</i>	Tel. ATwater 8543
SAN ANTONIO 5, TEXAS J. H. DEGETTE, <i>District Freight Agent</i>	817 Majestic Bldg., 212 E. Houston St. A. E. OBERGFELL, <i>Traveling Frt. Agt.</i> M. R. CONYERS, <i>Traveling Frt. & Pass. Agt.</i>	Tel. Fannin 8021
SAN FRANCISCO 5, CALIFORNIA J. E. LITTLE, <i>District Freight Agent</i> H. F. TWINING, <i>Traveling Freight Agent</i>	1000 Monadnock Bldg., 681 Market St. R. M. HOGGATT, <i>Traveling Freight Agent</i> W. F. BLOOD, <i>Traveling Freight Agent</i>	Tel. GARfield 1-5044
SEATTLE 1, WASHINGTON W. G. SMITH, <i>District Freight Agent</i> F. ROYCE, <i>Traveling Freight Agent</i>	3302 White Bldg., 1338 Fourth Ave. E. W. MCGRANE, <i>Traveling Freight Agent</i> C. F. SIMONIN, <i>Traveling Freight Agent</i>	Tel. ELLiott 8590

*** PENNSYLVANIA RAILROAD FREIGHT SCHEDULES FOR THE MOVEMENT OF FRUITS AND VEGETABLES
MOVING THROUGH WESTERN GATEWAYS**

<i>Destination</i>	<i>Routing Via</i>	FROM CHICAGO, ILL.		<i>Example Day</i>	<i>Arrive Destination</i>	<i>Example Day</i>
		<i>PRR Trains</i>	<i>Leave Chicago</i>			
Akron, Ohio	PRR	PF-8	11.00 PM	Monday	6.30 AM	Wednesday
Albany, N. Y.	PRR-D&H	NW-86	9.30 AM	Monday	12.30 AM	Thursday
Albany, N. Y.	PRR-D&H	CG-8	8.30 PM	Monday	12.30 AM	Friday
Altoona, Pa.	PRR	NW-86	9.30 AM	Monday	9.15 AM	Tuesday
Altoona, Pa.	PRR	CG-8	8.30 PM	Monday	7.30 PM	Tuesday
Baltimore, Md.	PRR	NW-86	9.30 AM	Monday	12.15 AM	Wednesday (1)
Baltimore, Md.	PRR	NW-88	10.15 PM	Monday	2.15 PM	Wednesday (2)
Boston, Mass.	PRR-D&H-B&M	NW-86	9.30 AM	Monday	3.00 AM	Thursday (1)
Boston, Mass.	PRR-D&H-B&M	CG-8	8.30 PM	Monday	3.00 AM	Friday (1)
Boston, Mass.	PRR-NH	NW-86	9.30 AM	Monday	8.35 PM	Wednesday (2)
Boston, Mass.	PRR-NH	CG-8	8.30 PM	Monday	11.40 PM	Wednesday (2)
Boston, Mass.	PRR-NH-UF-B&M	NW-86	9.30 AM	Monday	11.55 PM	Wednesday (2)
Boston, Mass.	PRR-NH-UF-B&M	CG-8	8.30 PM	Monday	2.30 AM	Thursday (1)
Boston, Mass.	PRR-NH-B&M	NW-86	9.30 AM	Monday	4.45 AM	Thursday (5)
Boston, Mass.	PRR-NH-B&M	CG-8	8.30 PM	Monday	4.45 AM	Thursday (5)
Bridgeport, Conn.	PRR-NH	NW-86	9.30 AM	Monday	3.30 AM	Thursday
Bridgeport, Conn.	PRR-NH	CG-8	8.30 PM	Monday	3.30 AM	Thursday
Buffalo, N. Y.	PRR	FW-8	7.30 PM	Monday	1.10 AM	Thursday
Buffalo, N. Y.	PRR	PF-8	11.00 PM	Monday	1.10 AM	Thursday
Canton, Ohio	PRR	FW-8	7.30 PM	Monday	1.05 PM	Tuesday
Canton, Ohio	PRR	PF-8	11.00 PM	Monday	9.15 PM	Tuesday
Cincinnati, Ohio	PRR	CO-2	10.30 AM	Monday	11.00 PM	Monday (2)
Cleveland, Ohio	PRR	PF-8	11.00 PM	Monday	6.30 AM	Wednesday (2)
Columbus, Ohio	PRR	NW-86	9.30 AM	Monday	8.45 PM	Monday
Columbus, Ohio	PRR	NW-88	10.15 PM	Monday	10.30 AM	Tuesday
Detroit, Mich.	PRR	PF-8	11.00 PM	Monday	4.00 AM	Wednesday
Erie, Pa.	PRR	FW-8	7.30 PM	Monday	1.40 PM	Wednesday
Erie, Pa.	PRR	PF-8	11.00 PM	Monday	1.40 PM	Wednesday
Fitchburg, Mass.	PRR-D&H-B&M	NW-86	9.30 AM	Monday	1.30 AM	Thursday
Fitchburg, Mass.	PRR-D&H-B&M	CG-8	8.30 PM	Monday	1.30 AM	Friday
Fitchburg, Mass.	PRR-NH-B&M	NW-86	9.30 AM	Monday	4.00 PM	Thursday
Fitchburg, Mass.	PRR-NH-B&M	CG-8	8.30 PM	Monday	4.00 PM	Thursday
Ft. Wayne, Ind.	PRR	FW-8	7.30 PM	Monday	2.20 AM	Tuesday
Ft. Wayne, Ind.	PRR	PF-8	11.00 PM	Monday	6.15 AM	Tuesday
Harlem River, N. Y.	PRR-NH	NW-86	9.30 AM	Monday	7.00 AM	Thursday
Harlem River, N. Y.	PRR-NH	CG-8	8.30 PM	Monday	7.00 AM	Thursday
Harrisburg, Pa.	PRR	NW-86	9.30 AM	Monday	7.00 AM	Wednesday
Harrisburg, Pa.	PRR	NW-88	10.15 PM	Monday	7.00 AM	Thursday
Hartford, Conn.	PRR-NH	NW-86	9.30 AM	Monday	3.50 AM	Thursday
Hartford, Conn.	PRR-NH	CG-8	8.30 PM	Monday	3.50 AM	Thursday
Indianapolis, Ind.	PRR	IL-2	7.30 PM	Monday	5.30 AM	Tuesday
Jersey City, N. J. <i>Harsimus Cove Yd.</i>	PRR	NW-86	9.30 AM	Monday	12.45 AM	Wednesday (3)
Jersey City, N. J. <i>Harsimus Cove Yd.</i>	PRR	CG-8	8.30 PM	Monday	2.45 PM	Wednesday (3)
Johnstown, Pa.	PRR	NW-86	9.30 AM	Monday	3.30 AM	Wednesday
Johnstown, Pa.	PRR	NW-88	10.15 PM	Monday	3.30 AM	Wednesday

For explanation of reference marks see page 11.

*** PENNSYLVANIA RAILROAD FREIGHT SCHEDULES FOR THE MOVEMENT OF FRUITS AND VEGETABLES
MOVING THROUGH WESTERN GATEWAYS**

FROM CHICAGO, ILL.

<i>Destination</i>	<i>Routing Via</i>	<i>PRR Trains</i>	<i>Leave Chicago</i>	<i>Example Day</i>	<i>Arrive Destination</i>	<i>Example Day</i>
Louisville, Ky.	PRR	IL-2	7.30 PM	Monday	11.15 AM	Tuesday
Newark, N. J.	PRR	NW-86	9.30 AM	Monday	11.45 PM	Tuesday (8)
Waverly Yard Newark, N. J. Waverly Yard	PRR	CG-8	8.30 PM	Monday	6.30 AM	Wednesday (7)
New Britain, Conn.	PRR-NH	NW-86	9.30 AM	Monday	3.45 AM	Thursday
New Britain, Conn.	PRR-NH	CG-8	8.30 PM	Monday	3.45 AM	Thursday
New Haven, Conn.	PRR-NH	NW-86	9.30 AM	Monday	2.35 PM	Wednesday
New Haven, Conn.	PRR-NH	CG-8	8.30 PM	Monday	6.00 PM	Wednesday
New London, Conn.	PRR-NH	NW-86	9.30 AM	Monday	4.25 PM	Wednesday
New London, Conn.	PRR-NH	CG-8	8.30 PM	Monday	3.45 AM	Thursday
New York (Piers 27-28)	PRR	NW-86	9.30 AM	Monday	Evening	Wednesday (4)
New York (Piers 27-28)	PRR	CG-8	8.30 PM	Monday	Evening	Wednesday (4)
Philadelphia, Pa.	PRR	NW-86	9.30 AM	Monday	1.30 AM	Wednesday (1)
Philadelphia, Pa.	PRR	NW-88	10.15 PM	Monday	4.30 PM	Wednesday (2)
Pittsburgh, Pa.	PRR	FW-8	7.30 PM	Monday	10.30 PM	Tuesday (2)
Pittsburgh, Pa.	PRR	PF-8	1.00 AM	Tuesday	4.45 AM	Wednesday (6)
Pittsfield, Mass.	PRR-NH	NW-86	9.30 AM	Monday	9.55 AM	Friday
Pittsfield, Mass.	PRR-NH	CG-8	8.30 PM	Monday	9.55 AM	Friday
Portland, Me.	PRR-D&H-B&M	NW-86	9.30 AM	Monday	9.30 PM	Thursday
Portland, Me.	PRR-D&H-B&M	CG-8	8.30 PM	Monday	9.30 PM	Friday
Portland, Me.	PRR-NH-B&M	NW-86	9.30 AM	Monday	11.00 AM	Thursday
Portland, Me.	PRR-NH-B&M	CG-8	8.30 PM	Monday	11.00 AM	Thursday
Providence, R. I.	PRR-NH	NW-86	9.30 AM	Monday	7.00 PM	Wednesday
Providence, R. I.	PRR-NH	CG-8	8.30 PM	Monday	10.25 PM	Wednesday
Rouses Point, N. Y.	PRR-D&H	NW-86	9.30 AM	Monday	3.30 PM	Thursday
Rouses Point, N. Y.	PRR-D&H	CG-8	8.30 PM	Monday	3.30 PM	Friday
Rutland, Vt.	PRR-D&H	NW-86	9.30 AM	Monday	1.00 PM	Thursday
Rutland, Vt.	PRR-D&H	CG-8	8.30 PM	Monday	1.00 PM	Friday
Schenectady, N. Y.	PRR-D&H	NW-86	9.30 AM	Monday	4.00 AM	Thursday
Schenectady, N. Y.	PRR-D&H	CG-8	8.30 PM	Monday	4.00 AM	Friday
Scranton, Pa.	PRR-D&H	NW-86	9.30 AM	Monday	10.00 AM	Wednesday
Scranton, Pa.	PRR-D&H	CG-8	8.30 PM	Monday	10.00 AM	Thursday
Somerville, Mass.	PRR-D&H-B&M	NW-86	9.30 AM	Monday	3.00 AM	Thursday
Somerville, Mass.	PRR-D&H-B&M	CG-8	8.30 PM	Monday	3.00 AM	Friday
Somerville, Mass.	PRR-NH-UF-B&M	NW-86	9.30 AM	Monday	2.30 AM	Thursday
Somerville, Mass.	PRR-NH-UF-B&M	CG-8	8.30 PM	Monday	2.30 AM	Thursday
Somerville, Mass.	PRR-NH-B&M	NW-86	9.30 AM	Monday	4.45 AM	Thursday
Somerville, Mass.	PRR-NH-B&M	CG-8	8.30 PM	Monday	4.45 AM	Thursday
Springfield, Mass.	PRR-D&H-B&M	NW-86	9.30 AM	Monday	4.30 AM	Thursday
Springfield, Mass.	PRR-D&H-B&M	CG-8	8.30 PM	Monday	4.30 AM	Friday
Springfield, Mass.	PRR-NH	NW-86	9.30 AM	Monday	10.00 PM	Wednesday
Springfield, Mass.	PRR-NH	CG-8	8.30 PM	Monday	4.45 AM	Thursday
Toledo, Ohio	PRR	PF-8	11.00 PM	Monday	8.30 PM	Tuesday
Washington, D. C.	PRR	NW-86	9.30 AM	Monday	11.00 PM	Tuesday (2)
Washington, D. C.	PRR	NW-88	10.15 PM	Monday	4.25 PM	Wednesday (2)

For explanation of reference marks see page 11.

*** PENNSYLVANIA RAILROAD FREIGHT SCHEDULES FOR THE MOVEMENT OF FRUITS AND VEGETABLES
MOVING THROUGH WESTERN GATEWAYS**

FROM CHICAGO, ILL.

<i>Destination</i>	<i>Routing Via</i>	<i>PRR Trains</i>	<i>Leave Chicago</i>	<i>Example Day</i>	<i>Arrive Destination</i>	<i>Example Day</i>
Wilkes-Barre, Pa.	PRR	NW-86	9.30 AM	Monday	4.15 AM	Wednesday
Wilkes-Barre, Pa.	PRR	CG-8	8.30 PM	Monday	4.15 AM	Thursday
Williamsport, Pa.	PRR	NW-86	9.30 AM	Monday	5.30 AM	Wednesday
Williamsport, Pa.	PRR	CG-8	8.30 PM	Monday	5.30 AM	Wednesday
Worcester, Mass.	PRR-D&H-B&M	NW-86	9.30 AM	Monday	4.15 AM	Thursday
Worcester, Mass.	PRR-D&H-B&M	CG-8	8.30 PM	Monday	4.15 AM	Friday
Worcester, Mass.	PRR-NH	NW-86	9.30 AM	Monday	12.35 AM	Thursday
Worcester, Mass.	PRR-NH	CG-8	8.30 PM	Monday	12.35 AM	Thursday
Youngstown, Ohio	PRR	FW-8	7.30 PM	Monday	7.00 AM	Wednesday
Youngstown, Ohio	PRR	PF-8	11.00 PM	Monday	7.00 AM	Wednesday
Long Island Rail Road Points	PRR-LIRR	NW-86	9.30 AM	Monday	(9)	Thursday
		CG-8	8.30 PM	Monday	(9)	Thursday

FROM EAST ST. LOUIS, ILL.

<i>Destination</i>	<i>Routing Via</i>	<i>PRR Trains</i>	<i>Leave E. St. Louis</i>	<i>Example Day</i>	<i>Arrive Destination</i>	<i>Example Day</i>
Akron, Ohio	PRR	VL-2	2.30 AM	Monday	5.00 PM	Tuesday
Akron, Ohio	PRR	SW-8	11.00 AM	Monday	11.45 PM	Tuesday
Akron, Ohio	PRR	PH-10	7.30 PM	Monday	11.45 PM	Tuesday
Albany, N. Y.	PRR-D&H	VL-2	2.30 AM	Monday	12.30 AM	Thursday
Albany, N. Y.	PRR-D&H	SW-8	11.00 AM	Monday	12.30 AM	Friday
Altoona, Pa.	PRR	VL-2	2.30 AM	Monday	8.35 AM	Tuesday
Altoona, Pa.	PRR	SW-8	11.00 AM	Monday	6.30 PM	Tuesday
Baltimore, Md.	PRR	VL-2	2.30 AM	Monday	12.15 AM	Wednesday (1)
Baltimore, Md.	PRR	SW-8	11.00 AM	Monday	2.15 PM	Wednesday (2)
Boston, Mass.	PRR-D&H-B&M	VL-2	2.30 AM	Monday	3.00 AM	Thursday (1)
Boston, Mass.	PRR-D&H-B&M	SW-8	11.00 AM	Monday	3.00 AM	Friday (1)
Boston, Mass.	PRR-NH	VL-2	2.30 AM	Monday	8.35 PM	Wednesday (2)
Boston, Mass.	PRR-NH	SW-8	11.00 AM	Monday	11.40 PM	Wednesday (2)
Boston, Mass.	PRR-NH-UF-B&M	VL-2	2.30 AM	Monday	11.55 PM	Wednesday (2)
Boston, Mass.	PRR-NH-UF-B&M	SW-8	11.00 AM	Monday	2.30 AM	Thursday (1)
Boston, Mass.	PRR-NH-B&M	VL-2	2.30 AM	Monday	4.45 AM	Thursday (5)
Boston, Mass.	PRR-NH-B&M	SW-8	11.00 AM	Monday	4.45 AM	Thursday (5)
Bridgeport, Conn.	PRR-NH	VL-2	2.30 AM	Monday	3.30 AM	Thursday
Bridgeport, Conn.	PRR-NH	SW-8	11.00 AM	Monday	3.30 AM	Thursday
Buffalo, N. Y.	PRR	VL-2	2.30 AM	Monday	1.10 AM	Thursday
Buffalo, N. Y.	PRR	SW-8	11.00 AM	Monday	1.10 AM	Thursday
Buffalo, N. Y.	PRR	PH-10	7.30 PM	Monday	1.10 AM	Friday
Canton, Ohio	PRR	VL-2	2.30 AM	Monday	12.30 AM	Wednesday
Canton, Ohio	PRR	SW-8	11.00 AM	Monday	12.30 AM	Wednesday
Canton, Ohio	PRR	PH-10	7.30 PM	Monday	8.30 AM	Wednesday
Cincinnati, Ohio	PRR	VL-2	2.30 AM	Monday	11.59 PM	Monday (2)
Cincinnati, Ohio	PRR	SW-8	11.00 AM	Monday	11.00 PM	Tuesday (2)
Cleveland, Ohio	PRR	VL-2	2.30 AM	Monday	7.45 PM	Tuesday (2)
Cleveland, Ohio	PRR	SW-8	11.00 AM	Monday	1.30 AM	Wednesday (1)
Cleveland, Ohio	PRR	PH-10	7.30 PM	Monday	1.30 AM	Wednesday (1)

For explanation of reference marks see page 11.

*** PENNSYLVANIA RAILROAD FREIGHT SCHEDULES FOR THE MOVEMENT OF FRUITS AND VEGETABLES
MOVING THROUGH WESTERN GATEWAYS**

FROM EAST ST. LOUIS, ILL.						
<i>Destination</i>	<i>Routing Via</i>	<i>PRR Trains</i>	<i>Leave E. St. Louis</i>	<i>Example Day</i>	<i>Arrive Destination</i>	<i>Example Day</i>
Columbus, Ohio	PRR	VL-2	2.30 AM	Monday	8.35 PM	Monday
Columbus, Ohio	PRR	SW-8	11.00 AM	Monday	5.45 AM	Tuesday
Columbus, Ohio	PRR	PH-10	7.30 PM	Monday	2.05 PM	Tuesday
Detroit, Mich.	PRR	VL-2	2.30 AM	Monday	4.00 AM	Wednesday
Detroit, Mich.	PRR	SW-8	11.00 AM	Monday	4.00 AM	Wednesday
Detroit, Mich.	PRR	PH-10	7.30 PM	Monday	4.00 AM	Wednesday
Erie, Pa.	PRR	VL-2	2.30 AM	Monday	1.40 PM	Wednesday
Erie, Pa.	PRR	SW-8	11.00 AM	Monday	1.40 PM	Wednesday
Erie, Pa.	PRR	PH-10	7.30 PM	Monday	1.40 PM	Thursday
Fitchburg, Mass.	PRR-D&H-B&M	VL-2	2.30 AM	Monday	1.30 AM	Thursday
Fitchburg, Mass.	PRR-D&H-B&M	SW-8	11.00 AM	Monday	1.30 AM	Friday
Fitchburg, Mass.	PRR-NH-B&M	VL-2	2.30 AM	Monday	4.00 PM	Thursday
Fitchburg, Mass.	PRR-NH-B&M	SW-8	11.00 AM	Monday	4.00 PM	Thursday
Harlem River, N. Y.	PRR-NH	VL-2	2.30 AM	Monday	7.00 AM	Thursday
Harlem River, N. Y.	PRR-NH	SW-8	11.00 AM	Monday	7.00 AM	Thursday
Harrisburg, Pa.	PRR	VL-2	2.30 AM	Monday	7.00 AM	Wednesday
Harrisburg, Pa.	PRR	SW-8	11.00 AM	Monday	7.00 AM	Thursday
Hartford, Conn.	PRR-NH	VL-2	2.30 AM	Monday	3.50 AM	Thursday
Hartford, Conn.	PRR-NH	SW-8	11.00 AM	Monday	3.50 AM	Thursday
Indianapolis, Ind.	PRR	VL-2	2.30 AM	Monday	10.15 AM	Monday
Indianapolis, Ind.	PRR	SW-8	11.00 AM	Monday	7.00 PM	Monday
Indianapolis, Ind.	PRR	PH-10	7.30 PM	Monday	3.15 AM	Tuesday
Jersey City, N. J. <i>Harsimus Cove Yd.</i>	PRR	VL-2	2.30 AM	Monday	12.45 AM	Wednesday (3)
Jersey City, N. J. <i>Harsimus Cove Yd.</i>	PRR	SW-8	11.00 AM	Monday	2.45 PM	Wednesday (3)
Johnstown, Pa.	PRR	VL-2	2.30 AM	Monday	3.30 AM	Wednesday
Johnstown, Pa.	PRR	SW-8	11.00 AM	Monday	3.30 AM	Wednesday
Johnstown, Pa.	PRR	PH-10	7.30 PM	Monday	3.30 AM	Thursday
Louisville, Ky.	PRR	VL-2	2.30 AM	Monday	3.00 AM	Tuesday
Louisville, Ky.	PRR	PH-10	7.30 PM	Monday	3.00 AM	Wednesday
Newark, N. J. <i>Waverly Yard</i>	PRR	VL-2	2.30 AM	Monday	11.45 PM	Tuesday (8)
Newark, N. J. <i>Waverly Yard</i>	PRR	SW-8	11.00 AM	Monday	1.45 PM	Wednesday (7)
New Britain, Conn.	PRR-NH	VL-2	2.30 AM	Monday	3.45 AM	Thursday
New Britain, Conn.	PRR-NH	SW-8	11.00 AM	Monday	3.45 AM	Thursday
New Haven, Conn.	PRR-NH	VL-2	2.30 AM	Monday	2.35 PM	Wednesday
New Haven, Conn.	PRR-NH	SW-8	11.00 AM	Monday	6.00 PM	Wednesday
New London, Conn.	PRR-NH	VL-2	2.30 AM	Monday	4.25 PM	Wednesday
New London, Conn.	PRR-NH	SW-8	11.00 AM	Monday	3.45 AM	Thursday
New York (Piers 27-28)	PRR	VL-2	2.30 AM	Monday	Evening	Wednesday (4)
New York (Piers 27-28)	PRR	SW-8	11.00 AM	Monday	Evening	Wednesday (4)
Philadelphia, Pa.	PRR	VL-2	2.30 AM	Monday	1.30 AM	Wednesday (1)
Philadelphia, Pa.	PRR	SW-8	11.00 AM	Monday	4.30 PM	Wednesday (2)
Pittsburgh, Pa.	PRR	VL-2	2.30 AM	Monday	10.30 PM	Tuesday (2)
Pittsburgh, Pa.	PRR	SW-8	11.00 AM	Monday	10.30 PM	Tuesday (2)
Pittsburgh, Pa.	PRR	PH-10	7.30 PM	Monday	4.45 AM	Wednesday (6)
Pittsfield, Mass.	PRR-NH	VL-2	2.30 AM	Monday	9.55 AM	Friday
Pittsfield, Mass.	PRR-NH	SW-8	11.00 AM	Monday	9.55 AM	Friday

For explanation of reference marks see page 11.

*** PENNSYLVANIA RAILROAD FREIGHT SCHEDULES FOR THE MOVEMENT OF FRUITS AND VEGETABLES
MOVING THROUGH WESTERN GATEWAYS**

FROM EAST ST. LOUIS, ILL.

<i>Destination</i>	<i>Routing Via</i>	<i>PRR Trains</i>	<i>Leave E. St. Louis</i>	<i>Example Day</i>	<i>Arrive Destination</i>	<i>Example Day</i>
Portland, Me.	PRR-D&H-B&M	VL-2	2.30 AM	Monday	9.30 PM	Thursday
Portland, Me.	PRR-D&H-B&M	SW-8	11.00 AM	Monday	9.30 PM	Friday
Portland, Me.	PRR-NH-B&M	VL-2	2.30 AM	Monday	11.00 AM	Thursday
Portland, Me.	PRR-NH-B&M	SW-8	11.00 AM	Monday	11.00 AM	Thursday
Providence, R. I.	PRR-NH	VL-2	2.30 AM	Monday	7.00 PM	Wednesday
Providence, R. I.	PRR-NH	SW-8	11.00 AM	Monday	10.25 PM	Wednesday
Rouses Point, N. Y.	PRR-D&H	VL-2	2.30 AM	Monday	3.30 PM	Thursday
Rouses Point, N. Y.	PRR-D&H	SW-8	11.00 AM	Monday	3.30 PM	Friday
Rutland, Vt.	PRR-D&H	VL-2	2.30 AM	Monday	1.00 PM	Thursday
Rutland, Vt.	PRR-D&H	SW-8	11.00 AM	Monday	1.00 PM	Friday
Schenectady, N. Y.	PRR-D&H	VL-2	2.30 AM	Monday	4.00 AM	Thursday
Schenectady, N. Y.	PRR-D&H	SW-8	11.00 AM	Monday	4.00 AM	Friday
Scranton, Pa.	PRR-D&H	VL-2	2.30 AM	Monday	10.00 AM	Wednesday
Scranton, Pa.	PRR-D&H	SW-8	11.00 AM	Monday	10.00 AM	Thursday
Somerville, Mass.	PRR-D&H-B&M	VL-2	2.30 AM	Monday	3.00 AM	Thursday
Somerville, Mass.	PRR-D&H-B&M	SW-8	11.00 AM	Monday	3.00 AM	Friday
Somerville, Mass.	PRR-NH-UF-B&M	VL-2	2.30 AM	Monday	2.30 AM	Thursday
Somerville, Mass.	PRR-NH-UF-B&M	SW-8	11.00 AM	Monday	2.30 AM	Thursday
Somerville, Mass.	PRR-NH-B&M	VL-2	2.30 AM	Monday	4.45 AM	Thursday
Somerville, Mass.	PRR-NH-B&M	SW-8	11.00 AM	Monday	4.45 AM	Thursday
Springfield, Mass.	PRR-D&H-B&M	VL-2	2.30 AM	Monday	4.30 AM	Thursday
Springfield, Mass.	PRR-D&H-B&M	SW-8	11.00 AM	Monday	4.30 AM	Friday
Springfield, Mass.	PRR-NH	VL-2	2.30 AM	Monday	10.00 PM	Wednesday
Springfield, Mass.	PRR-NH	SW-8	11.00 AM	Monday	4.45 AM	Thursday
Toledo, Ohio	PRR	VL-2	2.30 AM	Monday	8.30 PM	Tuesday
Toledo, Ohio	PRR	SW-8	11.00 AM	Monday	12.01 AM	Wednesday
Toledo, Ohio	PRR	PH-10	7.30 PM	Monday	12.01 AM	Wednesday
Washington, D. C.	PRR	VL-2	2.30 AM	Monday	11.00 PM	Tuesday (2)
Washington, D. C.	PRR	SW-8	11.00 AM	Monday	4.25 PM	Wednesday (2)
Wilkes-Barre, Pa.	PRR	VL-2	2.30 AM	Monday	4.15 AM	Wednesday
Wilkes-Barre, Pa.	PRR	SW-8	11.00 AM	Monday	4.15 AM	Thursday
Williamsport, Pa.	PRR	VL-2	2.30 AM	Monday	5.30 AM	Wednesday
Williamsport, Pa.	PRR	SW-8	11.00 AM	Monday	5.30 AM	Wednesday
Worcester, Mass.	PRR-D&H-B&M	VL-2	2.30 AM	Monday	4.15 AM	Thursday
Worcester, Mass.	PRR-D&H-B&M	SW-8	11.00 AM	Monday	4.15 AM	Friday
Worcester, Mass.	PRR-NH	VL-2	2.30 AM	Monday	12.35 AM	Thursday
Worcester, Mass.	PRR-NH	SW-8	11.00 AM	Monday	12.35 AM	Thursday
Youngstown, Ohio	PRR	VL-2	2.30 AM	Monday	7.00 AM	Wednesday
Youngstown, Ohio	PRR	SW-8	11.00 AM	Monday	7.00 AM	Wednesday
Youngstown, Ohio	PRR	PH-10	7.30 PM	Monday	7.00 AM	Thursday
Long Island Rail Road Points	PRR-LIRR	VL-2	2.30 AM	Monday	(9)	Thursday
	PRR-LIRR	SW-8	11.00 AM	Monday	(9)	Thursday

For explanation of reference marks see page 11.

*** PENNSYLVANIA RAILROAD FREIGHT SCHEDULES FOR THE MOVEMENT OF FRUITS AND VEGETABLES
MOVING THROUGH WESTERN GATEWAYS**

FROM EFFNER AND LOGANSFORT, IND.

NOTE: Traffic from Effner is moved to Logansport on following schedules:

<i>Train</i>	<i>Leave Effner</i>	<i>Example Day</i>	<i>Arrive Logansport</i>	<i>Example Day</i>	<i>For Trains</i>
LD-12	7.30 AM	Mon.	10.00 AM	Mon.	NW-86, CO-2
LD-20	4.45 PM	Mon.	7.15 PM	Mon.	CG-8, NW-88, IL-2

<i>Destination</i>	<i>Routing Via</i>	<i>PRR Trains</i>	<i>Leave Logansport</i>	<i>Example Day</i>	<i>Arrive Destination</i>	<i>Example Day</i>
Akron, Ohio	PRR	NW-86	2.15 PM	Monday	5.00 PM	Tuesday
Akron, Ohio	PRR	NW-88	3.30 AM	Tuesday	11.45 PM	Tuesday
Albany, N. Y.	PRR-D&H	NW-86	2.15 PM	Monday	12.30 AM	Thursday
Albany, N. Y.	PRR-D&H	CG-8	1.30 AM	Tuesday	12.30 AM	Friday
Altoona, Pa.	PRR	NW-86	2.15 PM	Monday	9.15 AM	Tuesday
Altoona, Pa.	PRR	CG-8	1.30 AM	Tuesday	7.30 PM	Tuesday
Baltimore, Md.	PRR	NW-86	2.15 PM	Monday	12.15 AM	Wednesday (1)
Baltimore, Md.	PRR	NW-88	3.30 AM	Tuesday	2.15 PM	Wednesday (2)
Boston, Mass.	PRR-D&H-B&M	NW-86	2.15 PM	Monday	3.00 AM	Thursday (1)
Boston, Mass.	PRR-D&H-B&M	CG-8	1.30 AM	Tuesday	3.00 AM	Friday (1)
Boston, Mass.	PRR-NH	NW-86	2.15 PM	Monday	8.35 PM	Wednesday (2)
Boston, Mass.	PRR-NH	CG-8	1.30 AM	Tuesday	11.40 PM	Wednesday (2)
Boston, Mass.	PRR-NH-UF-B&M	NW-86	2.15 PM	Monday	11.55 PM	Wednesday (2)
Boston, Mass.	PRR-NH-UF-B&M	CG-8	1.30 AM	Tuesday	2.30 AM	Thursday (1)
Boston, Mass.	PRR-NH-B&M	NW-86	2.15 PM	Monday	4.45 AM	Thursday (5)
Boston, Mass.	PRR-NH-B&M	CG-8	1.30 AM	Tuesday	4.45 AM	Thursday (5)
Bridgeport, Conn.	PRR-NH	NW-86	2.15 PM	Monday	3.30 AM	Thursday
Bridgeport, Conn.	PRR-NH	CG-8	1.30 AM	Tuesday	3.30 AM	Thursday
Buffalo, N. Y.	PRR	NW-86	2.15 PM	Monday	1.10 AM	Thursday
Buffalo, N. Y.	PRR	NW-88	3.30 AM	Tuesday	1.10 AM	Thursday
Canton, Ohio	PRR	NW-86	2.15 PM	Monday	12.30 AM	Wednesday
Canton, Ohio	PRR	NW-88	3.30 AM	Tuesday	12.30 AM	Wednesday
Cincinnati, Ohio	PRR	CO-2	2.50 PM	Monday	11.00 PM	Monday (2)
Cleveland, Ohio	PRR	NW-86	2.15 PM	Monday	7.45 PM	Tuesday (2)
Cleveland, Ohio	PRR	NW-88	3.30 AM	Tuesday	1.30 AM	Wednesday (1)
Columbus, Ohio	PRR	NW-86	2.15 PM	Monday	8.45 PM	Monday
Columbus, Ohio	PRR	NW-88	3.30 AM	Tuesday	10.30 AM	Tuesday
Erie, Pa.	PRR	NW-86	2.15 PM	Monday	1.40 PM	Wednesday
Erie, Pa.	PRR	NW-88	3.30 AM	Tuesday	1.40 PM	Wednesday
Fitchburg, Mass.	PRR-D&H-B&M	NW-86	2.15 PM	Monday	1.30 AM	Thursday
Fitchburg, Mass.	PRR-D&H-B&M	CG-8	1.30 AM	Tuesday	1.30 AM	Friday
Fitchburg, Mass.	PRR-NH-B&M	NW-86	2.15 PM	Monday	4.00 PM	Thursday
Fitchburg, Mass.	PRR-NH-B&M	CG-8	1.30 AM	Tuesday	4.00 PM	Thursday
Harlem River, N. Y.	PRR-NH	NW-86	2.15 PM	Monday	7.00 AM	Thursday
Harlem River, N. Y.	PRR-NH	CG-8	1.30 AM	Tuesday	7.00 AM	Thursday
Harrisburg, Pa.	PRR	NW-86	2.15 PM	Monday	7.00 AM	Wednesday
Harrisburg, Pa.	PRR	NW-88	3.30 AM	Tuesday	7.00 AM	Thursday
Hartford, Conn.	PRR-NH	NW-86	2.15 PM	Monday	3.50 AM	Thursday
Hartford, Conn.	PRR-NH	CG-8	1.30 AM	Tuesday	3.50 AM	Thursday
Indianapolis, Ind.	PRR	IL-2	2.15 AM	Tuesday	5.30 AM	Tuesday
Jersey City, N. J. Harsimus Cove Yd.	PRR	NW-86	2.15 PM	Monday	12.45 AM	Wednesday (3)
Jersey City, N. J. Harsimus Cove Yd.	PRR	CG-8	1.30 AM	Tuesday	2.45 PM	Wednesday (3)

For explanation of reference marks see page 11.

*** PENNSYLVANIA RAILROAD FREIGHT SCHEDULES FOR THE MOVEMENT OF FRUITS AND VEGETABLES
MOVING THROUGH WESTERN GATEWAYS**

FROM EFFNER AND LOGANSPOET, IND.

<i>Destination</i>	<i>Routing Via</i>	<i>PRR Trains</i>	<i>Leave Logansport</i>	<i>Example Day</i>	<i>Arrive Destination</i>	<i>Example Day</i>
Johnstown, Pa.	PRR	NW-86	2.15 PM	Monday	3.30 AM	Wednesday
Johnstown, Pa.	PRR	NW-88	3.30 AM	Tuesday	3.30 AM	Wednesday
Louisville, Ky.	PRR	IL-2	2.15 AM	Tuesday	11.15 AM	Tuesday
Newark, N. J.	PRR	NW-86	2.15 PM	Monday	11.45 PM	Tuesday (8)
Waverly Yard	PRR	CG-8	1.30 AM	Tuesday	6.30 AM	Wednesday (7)
New Britain, Conn.	PRR-NH	NW-86	2.15 PM	Monday	3.45 AM	Thursday
New Britain, Conn.	PRR-NH	CG-8	1.30 AM	Tuesday	3.45 AM	Thursday
New Haven, Conn.	PRR-NH	NW-86	2.15 PM	Monday	2.35 PM	Wednesday
New Haven, Conn.	PRR-NH	CG-8	1.30 AM	Tuesday	6.00 PM	Wednesday
New London, Conn.	PRR-NH	NW-86	2.15 PM	Monday	4.25 PM	Wednesday
New London, Conn.	PRR-NH	CG-8	1.30 AM	Tuesday	3.45 AM	Thursday
New York (Piers 27-28)	PRR	NW-86	2.15 PM	Monday	Evening	Wednesday (4)
New York (Piers 27-28)	PRR	CG-8	1.30 AM	Tuesday	Evening	Wednesday (4)
Philadelphia, Pa.	PRR	NW-86	2.15 PM	Monday	1.30 AM	Wednesday (1)
Philadelphia, Pa.	PRR	NW-88	3.30 AM	Tuesday	4.30 PM	Wednesday (2)
Pittsburgh, Pa.	PRR	NW-86	2.15 PM	Monday	10.30 PM	Tuesday (2)
Pittsburgh, Pa.	PRR	NW-88	3.30 AM	Tuesday	10.30 PM	Tuesday (2)
Pittsfield, Mass.	PRR-NH	NW-86	2.15 PM	Monday	9.55 AM	Friday
Pittsfield, Mass.	PRR-NH	CG-8	1.30 AM	Tuesday	9.55 AM	Friday
Portland, Me.	PRR-D&H-B&M	NW-86	2.15 PM	Monday	9.30 PM	Thursday
Portland, Me.	PRR-D&H-B&M	CG-8	1.30 AM	Tuesday	9.30 PM	Friday
Portland, Me.	PRR-NH-B&M	NW-86	2.15 PM	Monday	11.00 AM	Thursday
Portland, Me.	PRR-NH-B&M	CG-8	1.30 AM	Tuesday	11.00 AM	Thursday
Providence, R. I.	PRR-NH	NW-86	2.15 PM	Monday	7.00 PM	Wednesday
Providence, R. I.	PRR-NH	CG-8	1.30 AM	Tuesday	10.25 PM	Wednesday
Rouses Point, N. Y.	PRR-D&H	NW-86	2.15 PM	Monday	3.30 PM	Thursday
Rouses Point, N. Y.	PRR-D&H	CG-8	1.30 AM	Tuesday	3.30 PM	Friday
Rutland, Vt.	PRR-D&H	NW-86	2.15 PM	Monday	1.00 PM	Thursday
Rutland, Vt.	PRR-D&H	CG-8	1.30 AM	Tuesday	1.00 PM	Friday
Schenectady, N. Y.	PRR-D&H	NW-86	2.15 PM	Monday	4.00 AM	Thursday
Schenectady, N. Y.	PRR-D&H	CG-8	1.30 AM	Tuesday	4.00 AM	Friday
Scranton, Pa.	PRR-D&H	NW-86	2.15 PM	Monday	10.00 AM	Wednesday
Scranton, Pa.	PRR-D&H	CG-8	1.30 AM	Tuesday	10.00 AM	Thursday
Somerville, Mass.	PRR-D&H-B&M	NW-86	2.15 PM	Monday	3.00 AM	Thursday
Somerville, Mass.	PRR-D&H-B&M	CG-8	1.30 AM	Tuesday	3.00 AM	Friday
Somerville, Mass.	PRR-NH-UF-B&M	NW-86	2.15 PM	Monday	2.30 AM	Thursday
Somerville, Mass.	PRR-NH-UF-B&M	CG-8	1.30 AM	Tuesday	2.30 AM	Thursday
Somerville, Mass.	PRR-NH-B&M	NW-86	2.15 PM	Monday	4.45 AM	Thursday
Somerville, Mass.	PRR-NH-B&M	CG-8	1.30 AM	Tuesday	4.45 AM	Thursday
Springfield, Mass.	PRR-D&H-B&M	NW-86	2.15 PM	Monday	4.30 AM	Thursday
Springfield, Mass.	PRR-D&H-B&M	CG-8	1.30 AM	Tuesday	4.30 AM	Friday
Springfield, Mass.	PRR-NH	NW-86	2.15 PM	Monday	10.00 PM	Wednesday
Springfield, Mass.	PRR-NH	CG-8	1.30 AM	Tuesday	4.45 AM	Thursday
Washington, D. C.	PRR	NW-86	2.15 PM	Monday	11.00 PM	Tuesday (2)
Washington, D. C.	PRR	NW-88	3.30 AM	Tuesday	4.25 PM	Wednesday (2)

For explanation of reference marks see page 11.

*** PENNSYLVANIA RAILROAD FREIGHT SCHEDULES FOR THE MOVEMENT OF FRUITS AND VEGETABLES
MOVING THROUGH WESTERN GATEWAYS**

FROM EFFNER AND LOGANSPOET, IND.

<i>Destination</i>	<i>Routing Via</i>	<i>PRR Trains</i>	<i>Leave Logansport</i>	<i>Example Day</i>	<i>Arrive Destination</i>	<i>Example Day</i>
Wilkes-Barre, Pa.	PRR	NW-86	2.15 PM	Monday	4.15 AM	Wednesday
Wilkes-Barre, Pa.	PRR	CG-8	1.30 AM	Tuesday	4.15 AM	Thursday
Williamsport, Pa.	PRR	NW-86	2.15 PM	Monday	5.30 AM	Wednesday
Williamsport, Pa.	PRR	CG-8	1.30 AM	Tuesday	5.30 AM	Wednesday
Worcester, Mass.	PRR-D&H	NW-86	9.30 AM	Monday	4.15 AM	Thursday
Worcester, Mass.	PRR-D&H	CG-8	1.30 AM	Tuesday	4.15 AM	Friday
Worcester, Mass.	PRR-NH	NW-86	2.15 PM	Monday	12.35 AM	Thursday
Worcester, Mass.	PRR-NH	CG-8	1.30 AM	Tuesday	12.35 AM	Thursday
Youngstown, Ohio	PRR	NW-86	2.15 PM	Monday	7.00 AM	Wednesday
Youngstown, Ohio	PRR	NW-88	3.30 AM	Tuesday	7.00 AM	Wednesday
Long Island Rail Road Points	PRR-LIRR	NW-86	2.15 PM	Monday	(9)	Thursday
	PRR-LIRR	CG-8	1.30 AM	Tuesday	(9)	Thursday

For explanation of reference marks see page 11.

*** PENNSYLVANIA RAILROAD FREIGHT SCHEDULES FOR THE MOVEMENT OF FRUITS AND VEGETABLES
MOVING THROUGH WESTERN GATEWAYS**

FROM CINCINNATI, OHIO

<i>Destination</i>	<i>Routing Via</i>	<i>PRR Trains</i>	<i>Leave Cincinnati</i>	<i>Example Day</i>	<i>Arrive Destination</i>	<i>Example Day</i>
Akron, Ohio	PRR	FC-2	12.45 PM	Monday	11.45 PM	Monday
Akron, Ohio	PRR	CIN-2	10.00 PM	Monday	11.45 PM	Tuesday
Albany, N. Y.	PRR-D&H	LM-4	6.30 AM	Monday	12.30 AM	Thursday
Albany, N. Y.	PRR-D&H	CIN-2	10.00 PM	Monday	12.30 AM	Friday
Altoona, Pa.	PRR	LM-4	6.30 AM	Monday	8.35 AM	Tuesday
Altoona, Pa.	PRR	CIN-2	10.00 PM	Monday	4.15 PM	Tuesday
Baltimore, Md.	PRR	LM-4	6.30 AM	Monday	12.15 AM	Wednesday (1)
Baltimore, Md.	PRR	CIN-2	10.00 PM	Monday	2.15 PM	Wednesday (2)
Boston, Mass.	PRR-NH	LM-4	6.30 AM	Monday	8.35 PM	Wednesday (2)
Boston, Mass.	PRR-NH	CIN-2	10.00 PM	Monday	3.30 AM	Thursday
Boston, Mass.	PRR-NH-UF-B&M	LM-4	6.30 AM	Monday	11.55 PM	Wednesday (2)
Boston, Mass.	PRR-NH-UF-B&M	CIN-2	10.00 PM	Monday	7.00 AM	Thursday
Boston, Mass.	PRR-NH-B&M	LM-4	6.30 AM	Monday	4.45 AM	Thursday (5)
Boston, Mass.	PRR-NH-B&M	CIN-2	10.00 PM	Monday	4.45 AM	Friday (5)
Boston, Mass.	PRR-D&H-B&M	LM-4	6.30 AM	Monday	3.00 AM	Thursday (1)
Boston, Mass.	PRR-D&H-B&M	CIN-2	10.00 PM	Monday	3.00 AM	Friday (1)
Bridgeport, Conn.	PRR-NH	LM-4	6.30 AM	Monday	3.30 AM	Thursday
Bridgeport, Conn.	PRR-NH	CIN-2	10.00 PM	Monday	3.30 AM	Thursday
Buffalo, N. Y.	PRR	FC-2	12.45 PM	Monday	1.10 AM	Thursday
Buffalo, N. Y.	PRR	CIN-2	10.00 PM	Monday	1.10 AM	Thursday
Canton, Ohio	PRR	FC-2	12.45 PM	Monday	8.30 AM	Tuesday
Canton, Ohio	PRR	CIN-2	10.00 PM	Monday	12.30 AM	Wednesday
Chicago, Ill.	PRR	CO-3	12.45 PM	Monday	11.00 PM	Monday
Cleveland, Ohio	PRR	FC-2	12.45 PM	Monday	1.30 AM	Tuesday (1)
Cleveland, Ohio	PRR	CIN-2	10.00 PM	Monday	1.30 AM	Wednesday (1)
Columbus, Ohio	PRR	LM-4	6.30 AM	Monday	12.45 PM	Monday
Columbus, Ohio	PRR	FC-2	12.45 PM	Monday	5.20 PM	Monday
Columbus, Ohio	PRR	CIN-2	10.00 PM	Monday	3.45 AM	Tuesday
Detroit, Mich.	PRR	FC-2	12.45 PM	Monday	4.00 AM	Wednesday
Detroit, Mich.	PRR	CIN-2	10.00 PM	Monday	4.00 AM	Wednesday
Erie, Pa.	PRR	FC-2	12.45 PM	Monday	1.40 PM	Wednesday
Erie, Pa.	PRR	CIN-2	10.00 PM	Monday	1.40 PM	Wednesday
Harlem River, N. Y.	PRR-NH	LM-4	6.30 AM	Monday	7.00 AM	Thursday
Harlem River, N. Y.	PRR-NH	CIN-2	10.00 PM	Monday	7.00 AM	Thursday
Harrisburg, Pa.	PRR	LM-4	6.30 AM	Monday	7.00 AM	Wednesday
Harrisburg, Pa.	PRR	CIN-2	10.00 PM	Monday	7.00 AM	Thursday
Hartford, Conn.	PRR-NH	LM-4	6.30 AM	Monday	3.50 AM	Thursday
Hartford, Conn.	PRR-NH	CIN-2	10.00 PM	Monday	3.50 AM	Thursday
Jersey City, N. J. <i>Harsimus Cove Yd.</i>	PRR	LM-4	6.30 AM	Monday	12.45 AM	Wednesday (3)
Jersey City, N. J. <i>Harsimus Cove Yd.</i>	PRR	CIN-2	10.00 PM	Monday	2.45 PM	Wednesday (3)
Johnstown, Pa.	PRR	CIN-2	10.00 PM	Monday	3.30 AM	Wednesday
Newark, N. J. <i>Waverly Yard</i>	PRR	LM-4	6.30 AM	Monday	11.45 PM	Tuesday (8)
Newark, N. J. <i>Waverly Yard</i>	PRR	CIN-2	10.00 PM	Monday	1.45 PM	Wednesday (7)
New Haven, Conn.	PRR-NH	LM-4	6.30 AM	Monday	2.35 PM	Wednesday
New Haven, Conn.	PRR-NH	CIN-2	10.00 PM	Monday	8.15 PM	Wednesday

For explanation of reference marks see page 11.

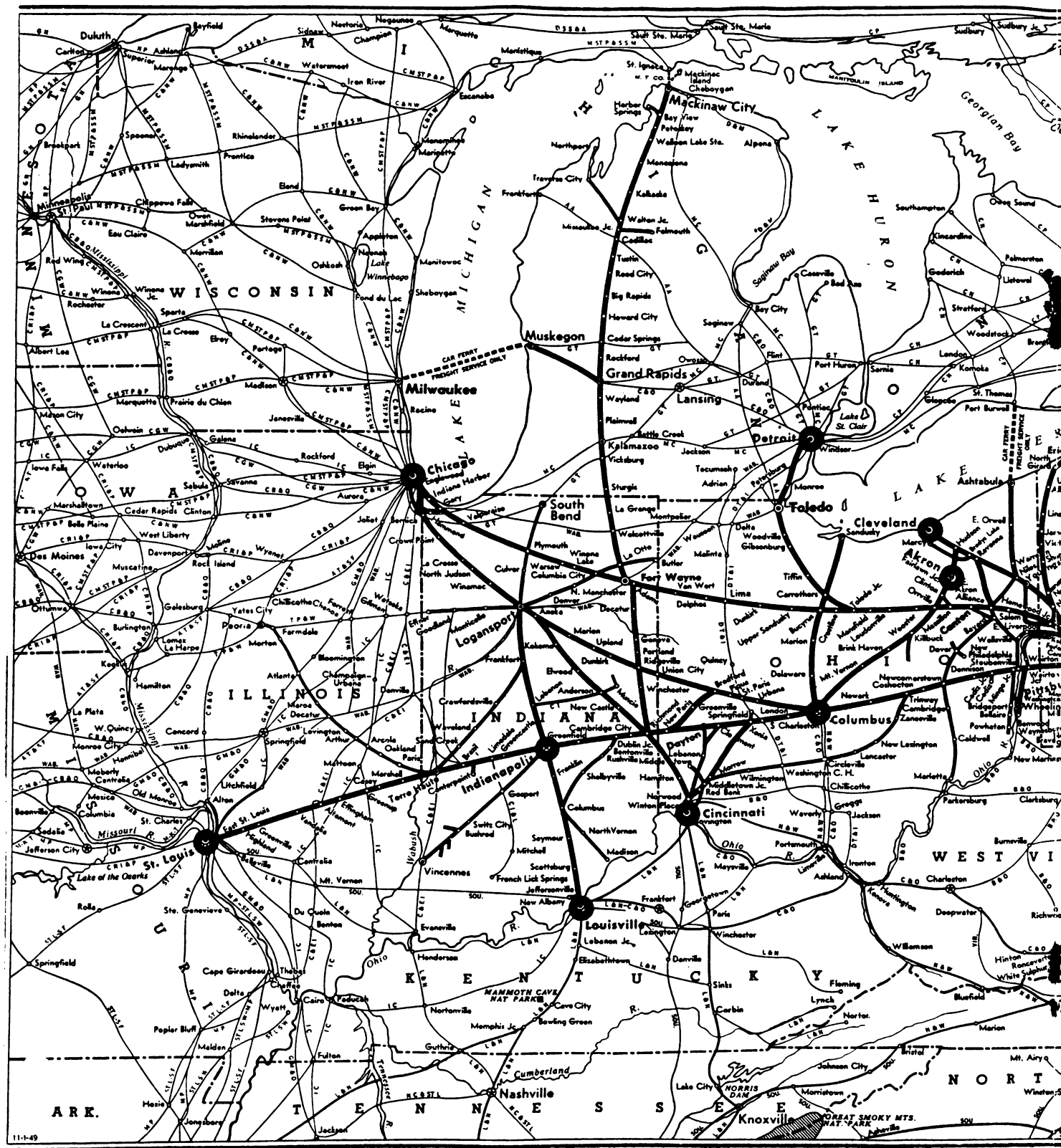
*** PENNSYLVANIA RAILROAD FREIGHT SCHEDULES FOR THE MOVEMENT OF FRUITS AND VEGETABLES
MOVING THROUGH WESTERN GATEWAYS**

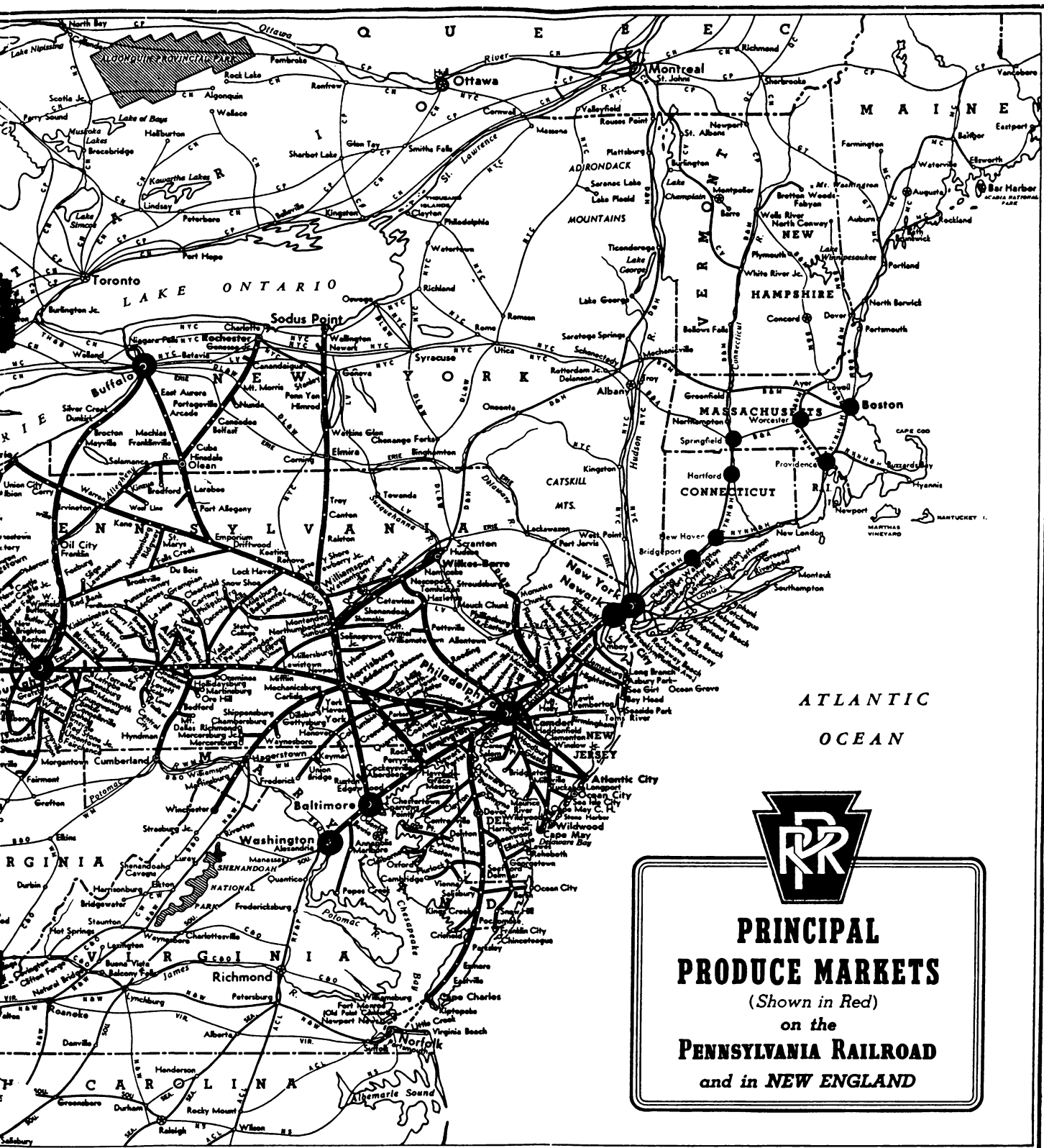
FROM CINCINNATI, OHIO

<i>Destination</i>	<i>Routing Via</i>	<i>PRR Trains</i>	<i>Leave Cincinnati</i>	<i>Example Day</i>	<i>Arrive Destination</i>	<i>Example Day</i>
New York (Piers 27-28)	PRR	LM-4	6.30 AM	Monday	Evening	Wednesday (4)
New York (Piers 27-28)	PRR	CIN-2	10.00 PM	Monday	Evening	Wednesday (4)
Philadelphia, Pa.	PRR	LM-4	6.30 AM	Monday	1.30 AM	Wednesday (1)
Philadelphia, Pa.	PRR	CIN-2	10.00 PM	Monday	4.30 PM	Wednesday (2)
Pittsburgh, Pa.	PRR	CIN-2	10.00 PM	Monday	10.30 PM	Tuesday (2)
Rutland, Vt.	PRR-D&H	LM-4	6.30 AM	Monday	1.00 PM	Thursday
Rutland, Vt.	PRR-D&H	CIN-2	10.00 PM	Monday	1.00 PM	Friday
Scranton, Pa.	PRR D&H	LM-4	6.30 AM	Monday	10.00 AM	Wednesday
Scranton, Pa.	PRR D&H	CIN-2	10.00 PM	Monday	10.00 AM	Thursday
Toledo, Ohio	PRR	FC-2	12.45 PM	Monday	8.30 PM	Tuesday
Toledo, Ohio	PRR	CIN-2	10.00 PM	Monday	12.01 AM	Wednesday
Washington, D. C.	PRR	LM-4	6.30 AM	Monday	11.00 PM	Tuesday (2)
Washington, D. C.	PRR	CIN-2	10.00 PM	Monday	4.25 PM	Wednesday (2)
Wilkes-Barre, Pa.	PRR	LM-4	6.30 AM	Monday	4.15 AM	Wednesday
Wilkes-Barre, Pa.	PRR	CIN-2	10.00 PM	Monday	4.15 AM	Thursday
Williamsport, Pa.	PRR	LM-4	6.30 AM	Monday	5.30 AM	Wednesday
Williamsport, Pa.	PRR	CIN-2	10.00 PM	Monday	5.30 AM	Wednesday
Youngstown, Ohio	PRR	FC-2	6.30 AM	Monday	7.00 AM	Wednesday
Youngstown, Ohio	PRR	CIN-2	10.00 PM	Monday	7.00 AM	Wednesday
Long Island Points	PRR-LIRR	LM-4	6.30 AM	Monday	(9)	Thursday
Long Island Points	PRR-LIRR	CIN-2	10.00 PM	Monday	(9)	Thursday

EXPLANATION OF REFERENCE MARKS

- (1) Contemplates market or auction delivery morning of arrival.
- (2) Contemplates market or auction delivery morning after arrival.
- (3) Contemplates early delivery on team tracks Jersey City evening of arrival.
- (4) Contemplates delivery at Piers 27, 28, New York for early delivery evening of arrival and for regular markets and auctions morning after arrival at (Harsimus Cove Yard).
- (5) Auction handling morning of arrival not guaranteed.
- (6) Contemplates placement for team track delivery morning of arrival and for market and auction following morning.
- (7) Provides for placement team track evening of day of arrival.
- (8) Contemplates placement team track evening of day following arrival.
- (9) Contemplates morning or evening arrival depending upon Long Island Railroad destination.
- (*) The schedules shown herein are subject to change without notice.





CLOSING HOURS FOR RECEIPT OF PERISHABLE FREIGHT FROM CONNECTING LINES FOR TRAIN CONNECTIONS

CHICAGO, ILL.

Connecting Line	Point of Interchange	Closing Hours NW-86	Closing Hours CG-8	Closing Hours NW-88	Closing Hours FW-8	Closing Hours PF-8	Closing Hours IL-2	Closing Hours CO-2
I.H.B.	Dolton	9.15 AM	8.15 PM	8.15 PM	—	—	8.15 PM	9.15 AM
I.H.B.	Ind. Harbor	—	—	—	4.00 PM	11.30 PM	—	—
B.R.C.	Clearing	7.30 AM	6.00 PM	6.00 PM	12.30 PM	7.30 PM	6.00 PM	7.30 AM
C.R.&I. {	Loomis St.	5.00 AM	6.00 PM	6.00 PM	6.00 PM	9.00 PM	5.00 PM	5.00 AM
C.J. {		5.00 AM	4.30 PM	4.30 PM	—	—	4.30 PM	5.00 AM
Soo Line {		5.00 AM	4.30 PM	4.30 PM	—	—	4.30 PM	5.00 AM
C.G.W. {	23rd St.	—	—	—	—	—	—	—
C.N.W. {		—	—	—	—	—	—	—
C.N.W.	59th St.	7.30 AM	6.30 PM	6.30 PM	—	—	6.30 PM	7.30 AM
C.M.St.P.&P.	Western Ave.	5.00 AM	3.00 PM	3.00 PM	3.00 PM	—	3.00 PM	5.00 AM
G.M.&O. {	Brighton Pk.	5.00 AM	4.00 PM	4.00 PM	—	—	4.00 PM	5.00 AM
B.&O.C.T. {		—	6.00 PM	6.00 PM	3.00 PM	6.00 PM	3.30 PM	—
Chgo. Prod. Terml.		—	6.00 PM	6.00 PM	3.00 PM	6.00 PM	3.30 PM	—

EAST ST. LOUIS, ILL.

Connecting Line	Point of Interchange	Closing Hours VL-2	Closing Hours SW-8	Closing Hours PH-10
T.R.R.A.	E. St. Louis	1.00 AM	10.15 AM	6.00 PM
A.&S.	E. St. Louis	11.30 PM	10.15 AM	6.00 PM
E. St. Louis Jct.	E. St. Louis	1.00 AM	10.15 AM	6.00 PM

EFFNER, IND.

Connecting Line	Point of Interchange	Closing Hour NW-86	Closing Hour CG-8	Closing Hour NW-88	Closing Hour IL-2	Closing Hour CO-2
T.P.&W.	Effner	7.30 AM	4.30 PM	4.30 PM	4.30 PM	7.30 AM

NOTE: Cars for trains NW-86 and CO-2 are moved from Effner to Logansport on train LD-12, departing Effner 7.30 AM, arriving Logansport 10.00 AM.
Cars for trains CG-8, NW-88 and IL-2 are moved from Effner to Logansport on train LD-20, departing Effner 4.45 PM, arriving Logansport 7.15 PM.

LOGANSPORT, IND.

Connecting Line	Point of Interchange	Closing Hour NW-86	Closing Hour CG-8	Closing Hour NW-88	Closing Hour CO-2
Wabash	Logansport	11.45 AM	9.30 PM	8.30 PM	11.45 AM

CINCINNATI, OHIO

Connecting Line	Point of Interchange	Closing Hours LM-4	Closing Hours FC-2	Closing Hours CIN-2	Closing Hours CO-3
L.&N.	Pt. Isabella	5.00 AM	11.05 AM	7.15 PM	11.05 AM
Southern Ry.	Vine St.	4.45 AM	11.05 AM	6.30 PM	11.05 AM

DESCRIPTION OF PRINCIPAL PRODUCE TERMINALS

AKRON, OHIO (PRR SUMMIT STREET PRODUCE YARD)

Some receivers use PRR Summit Street Team Track and Miller Ave. Team Track. Others have private sidings, either reached directly by PRR or through reciprocal switching on the flat rate.

BALTIMORE, MD. (PRR PRODUCE TERMINAL)

A modern facility, consisting of a Terminal Building or Sales Platform and Team Tracks or delivery yard with a capacity of 325 cars. There is no Auction at this terminal. Sales extend from 6:00 AM until 12:00 Noon (EST) on the Sales Platform and cars placed on the Team Tracks up to 7:00 AM (EST) are available for that day's market. The ordinary plan of operation is for the consignee to bring his samples to the platform, sell on the platform and deliver from the car.

BOSTON, MASS. (BOSTON MARKET TERMINAL)

The Boston Market Terminal, served by the NYNH&H, is used for the wholesaling of fresh fruits and vegetables and consists of three large brick houses, with a first floor area of approximately three acres, heated and lighted, and capacity of 250 carloads for sale at one time. Also, extensive covered platforms for sampling and sale direct from cars, with capacity of 50 carloads, and a bulk yard for sale direct from car with capacity of 250 carloads.

Cars to be unloaded into the market houses must be prior ordered by consignee. Market commences at 5:15 AM (EST) in the Summer during the period of Daylight Saving Time, and 6:15 AM (EST) during the remainder of the year.

Cars arriving at the Boston Market Terminal over the NYNH&H RR may be reconsigned to any other station on the New Haven Railroad, including Harlem River, N. Y., but not other New York City stations, at flat rate of \$12.39 per car.

This facility may be reached by the B&M RR in switching service at the Boston rate on basis of placement for market morning following day of arrival at Boston.

BOSTON, MASS.

(BOSTON & MAINE FRUIT & VEGETABLE AUCTION TERMINAL)

This facility is modern and heated, with capacity of 150 cars, the main house having room for 90 cars and an auxiliary facility with capacity of 60 cars, served by the B&M RR. Cars are unloaded and displayed in houses and sales are conducted in Auction rooms in same buildings. Auction sales begin in Winter at 8:30 AM and during Summer 7:30 AM (EST) daily except Saturday, Sunday and Holidays. Only cars on which the B&M have had a road haul movement may be diverted beyond Boston on the through rate to points in Northern New England on the B&M or Maine Central RR. This facility may be reached by the NYNH&H in switching service on the flat rate on the basis of placement for market morning following day of arrival at Boston.

BOSTON, MASS. (JUICE GRAPE DELIVERY YARD)

These are Team Track deliveries of the Boston & Maine RR, with a capacity of approximately 300 cars, especially suited for delivery of juice grapes. Covered platforms for inspection and display purposes, accommodating approximately 160 cars, are available. Service via PRR for this facility is the same as shown for the Boston & Maine Fruit & Vegetable Terminal.

BRIDGEPORT, CONN. (UNION STREET YARD)

The Union Street Yard, served by the NYNH&H RR, has a capacity of 90 cars and provides a convenient delivery for the produce trade.

BUFFALO, N. Y. (NIAGARA FRONTIER FOOD TERMINAL)

The Buffalo Produce trade is centered in the Niagara Frontier Food Terminal located on the Erie and Nickel Plate Roads and reached by the PRR through reciprocal switching on the flat rate. Principal receivers occupy buildings adjacent to Team Tracks. Cars arriving Buffalo at 5:00 AM are placed for unloading morning of arrival.

Railroad Team Tracks open 5:45 AM. Platform sales from tenants 7:00 AM. Platform sales close 1:00 PM. Opening hours will be one hour earlier during summer months June 1 to October 1.

CHICAGO, ILL. (CHICAGO PRODUCE TERMINAL)

The Chicago Terminal located between 27th and 31st Streets, extending from Ashland Avenue to Western Avenue with Team Tracks, Hold Tracks, Inspection Yards, and Auction facilities, has a capacity of 2200 cars. Auction sales commence at 7:30 AM (CST) Monday and Friday and 8:00 AM (CST) on Tuesday, Wednesday and Thursday. Produce may be removed from the terminal not earlier than 4:30 AM during the summer months or 5:30 AM during the winter months. Carload potato market located here from May 1st to August 31st.

CHICAGO, ILL.

(CHICAGO & NORTHWESTERN WOOD STREET TERMINAL)

The Wood Street Terminal is located between Western Avenue, Lincoln Street, 14th and 16th Streets with 600-car Team Track facilities; 1850-car hold track. This terminal is used as the carload potato market from September 1st to April 30th, also carloads of onions, cabbages and rutabagas handled here.

CHICAGO, ILL. (SOUTH WATER MARKET)

The Wholesale produce market is located between 14th Place and 15th Street and extends from Racine Avenue to Morgan Street. Selling hours are from 6:00 AM to 2:30 PM (CST) daily except Saturday.

CINCINNATI, OHIO (PLUM STREET PRODUCE YARD)

The PRR Plum Street Produce Yard has a capacity of 125 cars and is close to the produce trade. Sales in this yard (excluding Auction), open at 5:00 AM during the Summer and 6:00 AM during the Winter (EST). Sales by Auction are made in the United Fruit Auction House served by the Southern Ry. and reached by the PRR through switching on the flat rate. This Auction House is located on property adjoining the Plum Street Yard. Auction sales begin at 8:00 AM Monday, Wednesday and Friday.

CLEVELAND, OHIO (NORTHERN OHIO FOOD TERMINAL)

The Cleveland Produce trade is centered in and around the Northern Ohio Food Terminal located on the Nickel Plate and reached by the PRR through trackage arrangements on the flat rate. The principal dealers occupy space in the buildings adjacent to the Team Tracks and all deliveries except Auction sales are made from the Team Tracks. A separate building is used for the display and sale by Auction. Cars arriving by 3:05 AM will be placed at the

DESCRIPTION OF PRINCIPAL PRODUCE TERMINALS

Auction or on the Team Tracks for market morning of arrival.

Auction sales in the Northern Ohio Food Terminal area start at 8:00 AM. Private sales usually start about 5:00 AM, April to October, inclusive, and 6:00 AM, November to March, inclusive.

COLUMBUS, OHIO (PRR PRODUCE TERMINAL)

The PRR Produce Terminal is located on East Naghten Street in the heart of the city, and within several blocks of the wholesale produce district. It embraces 13 tracks with capacity of 81 cars and paved driveways. No regular market hours are observed.

Trading from cars spotted in PRR Produce Yard 4:00 AM to 5:30 PM (EST.)

DETROIT, MICH. (DETROIT UNION PRODUCE TERMINAL)

The Detroit Union Produce Terminal is located at Fort and Greene Streets, served by the Union Belt Railway, jointly owned and operated by the PRR, Wabash and Pere Marquette roads. The facility is divided between sales or delivery platforms; also used for the display of auction freight and team or delivery tracks. Sales of the Detroit Fruit Auction Company are conducted in rooms above the display platforms. Approximately 300 carloads of produce can be unloaded and displayed in the two modern buildings at one time. The team and inspection tracks have a capacity of 984 cars. The market opens at 6:00 AM (EST) Mondays and days following Holidays, 7:00 AM balance of week, and closes at 12:30 PM (EST) daily except Saturday, Sundays and Holidays. Market is closed on Saturdays, Sundays and Holidays except Washington's birthday. Auction sales begin at 9:30 AM (EST) daily except Saturdays, Sundays, and days preceding Holidays and Local Holidays.

HARTFORD, CONN. (SPRUCE ST. AND MORGAN ST. YARDS)

Spruce Street and Morgan Street Yards, served by the NYNH&H RR, capacity 150 cars, are located near the Produce trade.

INDIANAPOLIS, IND. (PRR PRODUCE TERMINAL)

The PRR Produce Terminal is located in proximity to the Commission Houses, at the intersection of Virginia Avenue, Delaware and Maryland Streets. These facilities are modern and have a capacity of 150 cars. The market opens at 4:00 AM (CST), April 1st to September 30th, and 5:00 AM (CST) balance of the year and deliveries continue until 12:00 noon.

JERSEY CITY, N. J.

At Henderson Street Station the PRR has two large modern Team Track yards known as the "Ball Ground" and "Waldo Avenue," serving the produce trade at Jersey City and within short trucking distance of the Holland Vehicular Tunnel and ferries to New York City.

LOUISVILLE, KY.

The produce dealers are located in the Eastern part of the city. Deliveries can be made from 14th and Portland Streets.

NEWARK, N. J. (PENNSYLVANIA PRODUCE TERMINAL)

The Pennsylvania Produce Terminal is a modern delivery yard adjacent to the wholesale market district. No auction or platform delivery.

NEW HAVEN, CONN.

(SILVER STREET AND WATER STREET YARDS)

The Silver Street Yard of the NYNH&H RR serves receivers having private sidings. Water Street Yard Team Tracks, NYNH&H RR, have a capacity of 200 cars, a close delivery to the Produce Houses.

NEW YORK CITY, N. Y. (MANHATTAN ISLAND)

The PRR serves the Produce Trade in New York City (Manhattan Island) from its Produce Terminal at Piers 27 and 28, North (Hudson) River. This Terminal covers approximately 12 acres of floor space and is entirely heated, ventilated and equipped with special lighting. There are 9 air-conditioned auction rooms which will accommodate approximately 2,000 persons. Heated barge facilities are used in conditioning pears under consignee's directions at specified tariff charges. The terminal is devoted exclusively to the handling of perishable foodstuffs, including dairy products, for the vast consuming area of Greater New York.

Arrival time of trains shown is at Harsimus Cove Yard, Jersey City, N. J., directly across the North (Hudson) River from the Produce Terminal. Cars are handled over the river on specially equipped carfloats. All freight arriving at the Produce Terminal is unloaded by the PRR and placed for direct delivery, private or auction sales. Under tariff regulations, orders for cars intended for delivery on any given date at the Produce Terminal must be lodged by consignee with the Agent at that station and will only be accepted on Mondays, Tuesdays, Wednesdays or Thursdays not later than 2:00 PM, prevailing time; on Fridays not later than 4:00 PM, prevailing time, and in emergency cases only, between 9:30 AM and 2:00 PM, prevailing time on Sundays; all verbal orders must be promptly confirmed in writing. Between 4:00 PM prevailing time, on Fridays and 9:30 AM, prevailing time, Sundays, orders must be lodged in writing and no verbal orders will be accepted.

The consignee is advised of passing of cars en route to permit placing of these orders.

Direct deliveries to consignees at the Produce Terminal commence in the evening and private auction sales are progressed until around noon, depending upon commodity, sales, etc.

HARSIMUS COVE YARD

Harsimus Cove Yard, located adjacent to the "Ball Ground" team track yard in Jersey City, N. J. has no team track facilities. All PRR freight trains for the New York area terminate in this yard. Fresh fruits and vegetables intended for delivery at PRR Produce Terminal, New York City, N. Y. are held in this yard until ordered for delivery by consignee, subject to car demurrage after expiration of free time. The PRR has siding connections from this yard with the Harborside Warehouse Company, Inc. and the Merchants Refrigerating Company, two of the most modern warehouses in the East. This yard also serves the export lighterage piers at Jersey City known as the Jersey City Piers, N. J.

DESCRIPTION OF PRINCIPAL PRODUCE TERMINALS

NEW YORK CITY, N. Y. (BROOKLYN TERMINAL MARKET)

This Terminal, owned and operated by the City of New York, is located at Remsen and Foster Avenues. It is served by a private siding connecting with the Long Island Rail Road. Shipments are restricted by the City to tenants who lease space from the City. The market is under jurisdiction of the East New York, N. Y. freight station of the Long Island Rail Road. Rates to that station apply. The PRR connects with the Long Island Rail Road by carfloat at Long Island City, N. Y.

NEW YORK CITY, N. Y. (MANHATTAN PRODUCE YARD)

This is a modern delivery and Auction yard situated between Newark and Jersey City at Kearney, N. J., and within short trucking distance of New York City and Brooklyn via the Holland Vehicular Tunnel and ferries from Jersey City to New York City. Facilities include Auction rooms and unlimited trackage.

This terminal is served from Harsimus Cove Yard (see schedules under New York City, New York—Manhattan Island), and placements are made from all trains mentioned to meet markets as determined by the receivers.

PHILADELPHIA, PA. (PRR PRODUCE TERMINAL)

The PRR Produce Terminal, located at Oregon and Delaware Avenues, Philadelphia, Pa., consists of three buildings. Building "A" used exclusively for display and Auction of fruit; Buildings "B" and "C" used for display and private sale of vegetables and certain fruits. An eight-story Cold Storage Warehouse occupies the street end of Building "C." Each building is served by four tracks affording space for the unloading of 128 cars. The Team Track yard has a capacity of 510 cars and is equipped with inspection platforms at car floor level, protected by umbrella sheds. There is only one Auction Company at Philadelphia which sells at the PRR and B&O terminals, alternating sales daily and at each sale cars at both terminals are sold in the same Auction room.

Auction sales of Florida Citrus commence at 9:00 AM.

Private sales of Fruits start at 7:00 AM and Vegetables at 7:30 AM. Subject to change on request of receivers.

PITTSBURGH, PA. (PRR PRODUCE TERMINAL)

A new and modern facility extending from 13th to 24th Streets along the Allegheny River. It is divided into three distinct operations—The Auction, Sales Platform and team or delivery tracks. Cars for the Auction are unloaded and displayed on the Sales Platform and the Auction is conducted in rooms above. Produce (other than Auction) to be handled over the Sales Platform, is unloaded by the Railroad during the night and at a given hour the Platform is opened to the trade and sales are conducted until 10:00 AM. Deliveries are made from the Sales Platform as well

as of Auction Freight until 1:00 PM. The adjacent Team Tracks have a capacity of 368 cars and auxiliary and hold tracks an additional 295 cars. Cars to be unloaded on the Sales or Auction platforms must be so ordered not later than 4:00 PM of the previous day.

Platform sales commence at 6:00 AM.

Auction sales commence at 6:30 AM Mondays to Fridays, inclusive. No Auction on Saturdays.

Team Track sales commence 6:00 AM. All Eastern Standard Time.

PROVIDENCE, R. I. (PROVIDENCE PRODUCE BUILDING)

This facility located on the NYNH&H RR consists of a modern brick, steel and concrete building with basement and two stories, divided into 25 stores. There are wide covered platforms on both sides of the building for the unloading of cars on one side and the loading of trucks on the other. The building is heated and refrigeration is available. Adjacent Team Tracks have a capacity of 100 cars. The market opens at 4:00 AM in the Summer and 6:00 AM in the Winter (EST).

SPRINGFIELD, MASS.

(BRIDGE STREET YARD— COLUMBUS AVENUE FREIGHT STATION)

The Bridge Street Yard, served exclusively by the NYNH&H RR, has a capacity of 100 cars. The Columbus Avenue Freight Station located in the Bridge Street Yard, is occupied by the Sawyer Co., the Springfield Celery Co., and the John Martinelli Co. Only traffic for these firms can be handled in reciprocal switching.

WASHINGTON, D. C. (PRR WATER STREET TERMINAL)

Dealers in the Southwest Market Area use PRR Water Street Terminal, where they occupy 34 stores. Cars may also be handled from the adjoining Water Street Team Tracks; capacity 92 cars. A part of the trade is located in the Union Market Terminal. The PRR Union Market Yard, capacity 84 cars, adjoins Union Market Terminal. B&O delivery at Eckington Yard is 5 blocks distant.

WORCESTER, MASS.

Public delivery Team Tracks of the B&M RR, capacity 85 cars, situated in the center of the city close to Warehouses of produce trade. Cars may be switched to this facility from the NYNH&H RR on the flat rate. Yard One Team Tracks of the NYNH&H with a capacity of 50 cars are situated in the center of Worcester near the Produce trade. Yard Nine Team Tracks, in So. Worcester, has a capacity of 250 cars. Market opens at 4:00 AM (EST) in Summer and 6:00 AM (EST) in Winter. Cars may be switched to this facility from the B&M RR on the flat rate.

**LIST OF CLOSING HOURS FOR THE ACCEPTANCE OF RECONSIGNMENT ORDERS FOR CARS OF PERISHABLE
FREIGHT ON HAND AT THE FOLLOWING FREIGHT STATIONS**

SPECIAL NOTE:

Times shown on this and two following pages are:

EASTERN STANDARD TIME for Cincinnati, Columbus and points east thereof.

CENTRAL STANDARD TIME for Indianapolis and Chicago.

During the period of Daylight Saving Time the closing hours listed herein will be one hour earlier on Standard Time basis.

HARSIMUS COVE:

"HOLD" tracks:

(Jersey City, N. J.)

2.00 PM FOR: All trains from Harsimus Cove, N. J. same night.
Piers 27-28 New York "Early Delivery" same night and regular market next morning.
LIRR: 8.00 PM float same night.
Newark, N. J.—Hunter St.: 1.00 AM 2nd day.
NYNH&H RR—Greenville, N. J.: 9.00 AM 1st day.
NYC RR, 68th St.: 12.30 PM float next day.
Erie RR, Marion, N. J.: 1.00 AM 2nd day.
West Shore RR, Jersey City, N. J.: 2.45 AM 2nd day.
Jersey City Ball Ground, N. J.: 11.59 PM same day.

HARSIMUS COVE YARD:

(Jersey City, N. J.)

Cars enroute Harsimus Cove, N. J. in trains scheduled to arrive Harsimus Cove by 4 PM

Jersey City Ball Ground, N. J.: 11.59 PM same day.

PIERS 27-28, N.Y.:

New York, N. Y.

4.00 PM FOR: All trains from Harsimus Cove, N. J. same night.
Jersey City Ball Ground, N. J.: 11.59 PM same day.
Hunter St., Newark, N. J.: 1.00 AM 2nd day.
LIRR: 6.00 AM float next day.
NYNH&H RR, Greenville, N. J.: 9.00 AM 2nd day.
NYC RR, 68th St.: 12.30 PM float next day.
Erie RR, Marion, N. J.: 1.00 AM 2nd day.
West Shore RR, Jersey City, N. J.: 2.45 AM 2nd day.

NEWARK, N. J.:

(Hunter St. Yard)

2.00 PM FOR: Trains from Waverly, N. J. same night.
Piers 27-28 New York: "Early Delivery" following day and regular market 2nd morning.
LIRR: 4.00 PM float next day.
Jersey City Ball Ground, N. J.: 11.59 PM next day.

2.00 PM FOR: NYNH&H RR, Greenville, N. J.: 1.25 PM next day.

NYC RR, 68th St.: 10.00 PM float next day.

Erie RR, Marion, N. J.: 12.01 PM 2nd day.

West Shore RR, Jersey City, N. J.: 2.45 AM 2nd day.

NEWARK, N. J.:

Merchants Refrigerator Co.

2.00 PM FOR: NYNH&H RR: 1.25 PM next day.

JERSEY CITY, N. J.:

(Ball Ground Yard and Waldo Avenue Yard)

2.00 PM FOR: All trains from Harsimus Cove, N. J. following night.

Pier 28 N.Y.: "Early Delivery" first night after date diverted, and regular market second morning after date diverted.

LIRR: 8.00 PM float following night.

Newark, N. J.—Hunter St.: 1.00 AM 2nd day.

NYNH&H RR—Greenville, N. J.: 9.00 AM 2nd day.

NYC RR, 68th St.: 10 PM float following night.

Erie RR, Marion, N. J.: 1.00 AM 2nd day.

West Shore RR, Jersey City, N. J.: 2.45 AM 2nd day.

JERSEY CITY, N. J.:

Merchants Refrigerator Co.

2.00 PM FOR: Erie RR, Marion, N. J.: 1.00 AM 2nd morning.

MANHATTAN PRODUCE YARD, N. J.:

(Juice grapes and watermelons only)

5.00 PM FOR: All trains from Waverly, N. J. after 6 PM next day.

NYNH&H RR: 9.00 AM 2nd day.

New York Dock float: 9.00 AM 2nd day.

Bush Dock float: 9.00 AM 2nd day.

BEDT float: 9.00 AM 2nd day.

LIRR: 6.30 PM next day.

NYC RR, 68th St. float: 10 PM next day.

Erie RR, Marion, N. J.: 11.59 PM next day.

West Shore RR, Jersey City, N. J.: 2.45 AM 2nd day.

Jersey City Ball Ground, N. J.: 11.59 PM next day.

Newark, N. J., Hunter St.: 8.00 AM 2nd day.

LIST OF CLOSING HOURS FOR THE ACCEPTANCE OF RECONSIGNMENT ORDERS FOR CARS OF PERISHABLE FREIGHT ON HAND AT THE FOLLOWING FREIGHT STATIONS

PHILADELPHIA, PA.:

Produce Terminal

10.00 AM FOR: BP5 to Edge Moor, Del. and beyond.
 4.00 PM FOR: P7 to Enola, Pa. & bey., incl. Wilkes-Barre, Pa. & so routing.
 P17 to Harrisburg, Pa. and intermediate points.
 S3 to Pottsville, Pa.
 N8 to Jersey City, N. J. and New York.
 N28 to Greenville, N. J.
 N30 to Trenton and Phillipsburg, N. J.
 PT80 to Camden, N. J.
 BP3 to Baltimore, Md., Washington, D. C. and Potomac Yard, Va.

PHILADELPHIA, PA.:

31st & Chestnut Sts. (Team track)

3.00 PM FOR: MD105 to Chester, Pa., Edge Moor, Del. & so routing.
 4.00 PM FOR: P7 to Enola, Pa. & bey., incl. Wilkes-Barre, Pa. & so routing.
 P17 to Harrisburg, Pa. & intermediate points.
 S3 to Pottsville, Pa.
 N8 to Jersey City, N. J. and New York.
 N28 to Greenville, N. J.
 N30 to Trenton and Phillipsburg, N. J.
 PT80 to Camden, N. J.
 PB3 to Baltimore, Md., Washington, D. C. and Potomac Yard, Va.

PHILADELPHIA, PA.:

Engleside Station

3.00 PM FOR: MD105 to Chester, Pa., Edge Moor, Del. & so routing.
 4.00 PM FOR: N30 to Trenton and Phillipsburg, N. J.

WASHINGTON, D. C.:

(Water Street)

7.00 AM FOR: BP2 to Philadelphia, Pa.
 10.00 AM FOR: MD8 to Newark, Jersey City and Greenville, N. J.
 12.01 PM FOR: B9 to Enola, Pa. and beyond.
 5.00 PM FOR: BP106 to Baltimore.
 MD6 to Greenville, N. J.
 MD12 to Jersey City, N. J.
 EC5 to Enola, Pa. and beyond.

WASHINGTON, D. C.:

(Ivy City Team Track and Union Market)

4.00 AM FOR: BP2 to Philadelphia, Pa.

11.00 AM FOR: BP106 to Baltimore, Md.
 B9 to Enola, Pa. and beyond.
 MD8 to Newark, Greenville and Jersey City, N. J.
 5.00 PM FOR: MD6 to Greenville, N. J.
 MD12 to Jersey City, N. J.
 EC5 to Enola, Pa. and beyond.

BALTIMORE, MD.:

Produce Terminal

10.00 AM FOR: BP2 to Philadelphia, Pa.
 4.00 PM FOR: CS2 to Waverly, Jersey City and Greenville, N. J. and so routing.
 MD116 to Edge Moor, Del. and so routing and Camden, N. J.
 LCL5 to Enola, Pa. and beyond.

ENOLA, PA.:

Yard Hold Track

1.30 AM FOR: SW8 to Greenville, N. J.
 NY8 to Jersey City, N. J.
 SP8 to Philadelphia, Pa.
 AB6 to Potomac Yard, Va.
 9.00 AM FOR: BF5 to Renovo, Pa. and Buffalo, N. Y. and beyond.
 S82 to Wilkes-Barre, Pa.
 B2 to Washington, D. C.
 1.00 PM FOR: SP2 to South Philadelphia, Pa.
 FJ6 to Frankford Jct., Pa. and Camden, N. J.
 P6 to Philadelphia, Pa.
 NY4 to Jersey City, N. J.
 P14 to Waverly, N. J.
 CE2 to Jersey City, N. J.
 TH2 to Wilmington, Del. and Chester, Pa.
 B6 to Baltimore, Md., Washington, D.C. and Potomac Yard, Va.
 PNE2 to Greenville, N. J. and so routing.
 EH2 to Edge Moor, Del. and so routing.
 P32 to Cape Charles, Va., and beyond.

HARRISBURG, PA.:

Freight Station

12.01 PM FOR: BNY16 to Newark, Greenville and Jersey City, N. J.
 B6 to Baltimore, Md., Washington, D.C. and Potomac Yard, Va.
 SP2 to Philadelphia, Pa.

ALTOONA, PA.:

Freight Station

1.00 PM FOR: CSB8 to Wilkes-Barre, Pa. and so routing.
 5.00 PM FOR: SW30 to Enola, Pa. and beyond.
 AN16 to Williamsport, Pa.

LIST OF CLOSING HOURS FOR THE ACCEPTANCE OF RECONSIGNMENT ORDERS FOR CARS OF PERISHABLE FREIGHT ON HAND AT THE FOLLOWING FREIGHT STATIONS

BUFFALO, N. Y.:

Niagara Frontier Food Terminal

1.00 PM FOR: BNY16 to Jersey City, N. J.
BF4 to Renovo, Pa. and beyond.
8.00 PM FOR: BNY14 to Philadelphia, Pa.
NOTE...11.00 AM for BF4 and BNY16 on cars requiring reicing.
6.00 PM FOR: BNY14 on cars requiring reicing.

PITTSBURGH, PA.:

Produce Terminal

3.00 PM FOR: PT60 Pitcairn to Altoona, Pa. excl.
PG2 to Altoona, Pa. and east.
4.00 PM FOR: PB1 (following day) to Oil City, Pa. and beyond.

CLEVELAND, O.:

Northern Ohio Food Terminal

4.30 PM FOR: CE4 to Pittsburgh, Pa. and beyond to Altoona, Pa. excl.
7.00 PM FOR: FC1 to Columbus and Cincinnati, O.
CE2 to Altoona, Pa. and beyond.
NOTE...NKP will accept diversion orders and endeavor to protect delivery of cars reconsigned by time stated at Northern Ohio Food Terminal to PRR in time for connection with trains mentioned. It does not guarantee such movement of cars for which diversion orders are received after 3.00 PM.

CINCINNATI, O.:

Plum St. Station

3.00 AM FOR: LM4 to Columbus, O., Toledo, O., Detroit, Mich., Canton, O., Youngstown, O., New Castle, Pa., Zanesville, O., Wheeling, W. Va., Pittsburgh, Pa., and Altoona, Pa. and east thereof.
9.00 AM FOR: FC2 to Dayton, Columbus, Cleveland and Canton, Ohio.
DC8 to Springfield, O., Detroit, Mich. and Toledo, O. via DT&I.
CN38 to Middletown, O.
4.30 FOR: CIN2 to Dayton, O., Springfield, O., Columbus, O., Canton, O., Youngstown, O., New Castle, Pa., Erie, Pa., Buffalo, N. Y., Zanesville, O., Pittsburgh, Pa., Altoona, Pa. and beyond.

COLUMBUS, O.:

Produce Yard

8.00 AM FOR: VL6 to Pittsburgh, Pa.
11.00 AM FOR: PH10 to Pittsburgh, Pa.
TC16 to Cincinnati, O.
TD11 to Toledo, O. and Detroit, Mich.
LM4 to Steubenville, O., Wheeling, W. Va. and Pittsburgh, Pa.
FC2 to Akron and Cleveland, O.
5.30 PM FOR: VL2 to Altoona, Pa. and beyond.
CN27 to Springfield and Dayton, O.
PH4 to Newark, Zanesville and Cambridge, O.
CIN1 to Cincinnati, O.
TC15 to Detroit, Mich., Toledo, O., Ft. Wayne, Ind. and Grand Rapids, Mich.
CC2 to Canton, O., Youngstown, O., New Castle, Pa., Sharon, Pa., Erie, Pa. and Buffalo, N. Y.

INDIANAPOLIS, IND.:

Produce Terminal

8.00 AM FOR: VL2 to Columbus, O., Pittsburgh, Pa., Altoona, Pa. and beyond.
CI4 to Cincinnati, O.
3.00 PM FOR: IL4 to Louisville, Ky.
SW8 to Columbus, O., Pittsburgh, Pa., Altoona, Pa. and beyond.
IS3 to Vincennes, Ind.
XD6 to Cincinnati, O., Dayton, O., Springfield, O., Toledo, O., Detroit, Mich., Akron, O., Cleveland, O., Canton, O., Youngstown, O., New Castle, Pa., Erie, Pa. and Buffalo, N. Y.
10.00 PM FOR: PH10 to Pittsburgh and Altoona, Pa. exclusive.

CHICAGO, ILL.:

Polk St. Station (Team Track)

3.00 PM FOR: FW8 to Pittsburgh, Pa.
WS4 to Enola, Pa. and beyond.
IL2 to Louisville, Ky., and Indianapolis, Ind.
CO2 to Cincinnati, O.
NW88 to Columbus, O.

Morgan St. Station (Team Track)

4.00 PM FOR: CO2 to Cincinnati, O.
NW88 to Columbus, O.

COLD STORAGE WAREHOUSES IN TERRITORY SERVED BY PENNSYLVANIA RAILROAD

LOCATION	NAME OF WAREHOUSE	NOTE	LOCATION	NAME OF WAREHOUSE	NOTE
Akron, Ohio	Sumner Butter Company	2	Dayton, Ohio	Terminal Cold Storage & Ice Company	3
Altoona, Pa.	Frozen Farm Products, Inc.	1	Detroit, Mich.	Detroit Harbor Terminals, Inc.	1
Anglesea, N. J.	Penna. Ice Mfg. & Coal Corp.	4		General Cold Storage & Warehouse, Inc.	2
Baltimore, Md.	Merchants Terminal Corp'n	1		Grand Trunk Warehouses & Cold Storage Co.	2
Bellaire, Ohio	Koehnline Ice & Storage Company	1	Dover, Del.	Diamond Cold Storage Co.	1
Buffalo, N. Y.	Arctic Ice & Cold Storage Company	1	East Palestine, O.	Charles Adams	1
	Buffalo Cold Storage Company	2	Elmira, N. Y.	Hygeia Refrigerating Company	1
	Fairmont Creamery Company	2	Erie, Pa.	Lake Shore Ice Cream Company	2
	Terminal & Transportation Corporation	2		Union Storage Company	2
Cambridge, Ohio	Cambridge Ice & Cold Storage Company	1	Exmore, Va.	Eastern Shore Public Service Company	1
Camden, N. J.	Camden Refrigerating & Terminals Company	4	Farrell, Pa.	Sharon Coal & Ice Company	2
Canton, Ohio	Canton Ice & Fuel Co.	1	Fort Wayne, Ind.	Fruit Distributors, Inc.	1
	City Ice & Fuel Company	1		Mitchell Sales & Storage Company	1
Carlisle, Pa.	Hygienic Ice Company	1		Sherman White & Company	2
Chambersburg, Pa.	Chambersburg Ice & Cold Storage Company	1	Georgetown, Del.	John S. Isaacs & Sons	3
	Quigley-Hafer Cold Storage Co.	1	Glassboro, N. J.	Glassboro Cold Storage Co.	4
Chicago, Ill.	Booth Cold Storage Company	2	Grand Rapids, Mich.	General Cold Storage Co.	2
	Central Cold Storage Company	2	Greencastle, Pa.	Greencastle Ice & Cold Storage Company	1
	Chicago Cold Storage Company	2		Antrim Storage Co.	1
	Fulton Market Cold Storage Company	1	Greenville, Pa.	Sharon Coal & Ice Company	2
	Mid-City Cold Storage Company	3	Hagerstown, Md.	Baer Bros. (W. M. Ry. Siding—open P.R.R. swg.)	2
	North American Cold Storage Company	1	Hall, N. Y.	Hall Cold Storage Company	1
	Produce Terminal Cold Storage Company	2	Hamilton, Ohio	Valley Ice Co.	2
	United States Cold Storage Company	2	Harrisburg, Pa.	United Ice & Coal Company Ltd.	1
	Western Refrigerating Company	3	Indianapolis, Ind.	Indiana Terminal & Refrigerating Co.	2
Cincinnati, Ohio	Cincinnati Terminal Warehouses	1		Rolling Mills, Inc. No. 2	2
	Cincinnati Ice Manufacturing & Cold Storage Co.	1		South Side Cold Storage Company	2
	Merchants Cold Storage Company	2		Strohm Warehouse & Cartage Co.	2
Cleveland, Ohio	Distribution Terminal Warehouse Company	2	Jersey City, N. J.	Harborside Warehouse Co., Inc.	1
	Federal Cold Storage Company	2		Hudson Refrigerating Company	2
	National Terminals Corp'n	2		Merchants Refrigerating Company	1
	Sheriff Street Storage Company	3		National Cold Storage Company	2
Columbus, Ohio	Fairmont Creamery Company	1		Seaboard Terminal & Refrigeration Company	2
	Federal Cold Storage Company	2		Union Terminal Cold Storage Company	2
Crisfield, Md.	Consumers Public Service Company	1	Kalamazoo, Mich.	Kalamazoo Cold Storage Co.	2
Cuba, New York	Cuba Cheese & Trading Co.	1	Lancaster, Pa.	Consumers Ice & Coal Co.	1
	Great Atlantic & Pacific Tea Co.	2		Lancaster Ice Co.	1
			Lewistown, Pa.	Lewistown Ice & Cold Storage Company	1
			Lima, Ohio	Lima Ice & Coal Company	1

NOTE 1—Served direct by Pennsylvania Railroad.

NOTE 2—Have siding on connecting line—Pennsylvania Railroad can make delivery through absorption switching.

NOTE 3—No private siding, but conveniently located to Pennsylvania Railroad Team Track.

NOTE 4—Located on Pennsylvania Railroad, Reading, Seashore.

NOTE 5—Have siding on P.&L.E. RR not open to switching, but can and do take delivery from Point Bridge, Team Track PRR which is across street from their plant.

COLD STORAGE WAREHOUSES IN TERRITORY SERVED BY PENNSYLVANIA RAILROAD

LOCATION	NAME OF WAREHOUSE	NOTE	LOCATION	NAME OF WAREHOUSE	NOTE
Louisville, Ky.	Grocers Ice & Cold Storage	2	St. Louis, Mo.	Booth Cold Storage Company	2
	Merchants Ice & Cold Storage Co.	2		Federal Cold Storage Company	2
Marietta, Ohio	Crystal Ice Company	1		Merchants Refrigerating Co.	2
Marion, N. Y.	W. M. Storage Corp.	1		Mound City Ice & Cold Storage Co.	2
Marion, Ohio	City Ice & Cold Storage Co.	2		Tyler Warehouse & Cold Storage Co.	2
Martinsburg, W. Va.	Cassco Berkeley Corporation	1	Salisbury, Md.	Salisbury Ice Company	1
Martins Ferry, Ohio	Arctic Foods Storage, Inc.	1		W. F. Messick Ice Company	1
Middletown, Ohio	Middletown Ice & Coal Co.	1		Croninger Packing Co.	2
Muskegon, Mich.	West Michigan Dock & Market Co.	1	Sharon, Pa.	Sharon Coal & Ice Company	2
National Stock Yards, Ill.	North American Cold Storage Company	2	South Bend, Ind.	Ullery Cold Storage & Warehouse Company	2
Newark, N. J.	Merchants Refrigerating Company	1	Springfield, Ohio	W. R. Hackett Company	1
Newark, N. Y.	Newark Cold Storage & Ice Company	1	Sunbury, Pa.	Susquehanna Food Preservers & Lockers, Inc.	1
Newark, Ohio	Newark Ice & Cold Storage Company	2	Swedesboro, N. J.	Atlantic Ice Manufacturing Company	4
New Castle, Pa.	Lawrence Ice & Cold Storage Company	1	Terre Haute, Ind.	Terre Haute Ice, Fuel & Cold Storage Company	2
New Holland, Pa.	Atlantic Ice Mfg. Co.	1	Tiffin, Ohio	Gray & White	2
Norfolk, Va.	Bousch Ice & Cold Storage Company	2	Toledo, Ohio	Great Lakes Terminal Warehouse	2
	Commonwealth Storage & Ice Company	2	Uhrichsville, O.	Uhrichsville Ice Company	1
	Jones Cold Storage Corp'n	2	Vincennes, Ind.	Ebner Ice & Cold Storage Co.	2
	Virginia Ice & Freezing Corp'n	2	Wallington, N. Y.	Wallington Cold Storage & Ice Company	1
Olean, N. Y.	Riley & Wands	1	Warren, Pa.	Smith & Horton Company	1
Peoria, Ill.	Peoria Service Co. (Cold Storage) Plant 1	2	Washington, D. C.	Terminal Refrigerating & Warehousing Company	1
	Peoria Service Co. (Cold Storage) Plant 2	2	Waynesboro, Pa.	Waynesboro Ice & Cold Storage Company	1
	Peoria Service Co. (Cold Storage) Plant 3	1	West Chester, Pa.	Fruit Growers of Chester County, Inc.	1
	Peoria Service Co. (Icing Plant) Plant 4	1		West Chester Cold Storage & Ice Co.	1
Philadelphia, Pa.	General Cold Storage Co. (Penna. Produce Terminal)	2	West Moorestown, N. J.	Farmers Storage Company	1
	Quaker City Cold Storage Co. (Spruce St. Stores)	1	Wilkes-Barre, Pa.	Eastern Penna. Storage Co.	2
Pitman, N. J.	Pitman Cold Storage	4	Wilmington, Del.	Diamond Cold Storage Co.	1
Pittsburgh, Pa.	Federal Cold Storage Company	1	Winchester, Va.	Robinson Cold Storage Co. (CL)	1
	North Pole Cold Storage Company	5		Winchester Cold Storage Co., Inc.	1
	Standard Ice Company	1	Woodstown, N. J.	Woodstown Ice & Coal Co.	4
	Union Storage Company	1	Wyoming, Del.	Wyoming Ice & Cold Storage Company	1
	Wainwright Cold Storage Company	3	York, Pa.	Tassia, P.	3
Riverside, N. J.	Atlantic Ice Mfg. Co.	1		York Ice & Milk Company	3
Riverton, N. J.	Jersey Refrigerating Co.	1		York Storage & Ice Co.	3
Rochester, N. Y.	Rochester Ice & Cold Storage Utilities, Inc.	2	Zanesville, Ohio	Zanesville Cold Storage Company	2
	Upton Cold Storage Company	2			

NOTE 1—Served direct by Pennsylvania Railroad.

NOTE 2—Have siding on connecting line—Pennsylvania Railroad can make delivery through absorption switching.

NOTE 3—No private siding, but conveniently located to Pennsylvania Railroad Team Track.

NOTE 4—Located on Pennsylvania Railroad, Reading, Seashore.

NOTE 5—Have siding on P.&L.E. RR not open to switching, but can and do take delivery from Point Bridge Team Track PRR which is across street from their plant.

PENNSYLVANIA RAILROAD ICING STATIONS

(See Circular No. 5-H Issued by National Perishable Freight Committee)

REGULAR ICING STATIONS:

Altoona, Pa. Buffalo, N. Y. Buttonwood Yard, Pa. (Wilkes-Barre) Camden (Pavonia), N. J. Canton, Ohio Chambersburg, Pa. Clayton, Del. Columbus, Ohio Delmar, Del. Elmira, N. Y.	Grand Rapids, Mich. Greenville, N. J. (2) Hagerstown, Md. Huntingdon, Pa. Indianapolis (Hawthorne), Ind. Jersey City (Harsimus Cove Yard), N. J. (Only through traffic moving to connecting lines.) Norfolk, Va. Renovo, Pa.
---	---

EMERGENCY ICING STATIONS:

Altoona, Pa. Berlin, Md. Cadillac, Mich. Cambridge, Md. Canton, Ohio Cape Charles, Va. Chicago (47th Street), Ill. Chicago (59th Street), Ill. Cincinnati, Ohio Columbus, Ohio Crestline, Ohio Crisfield, Md. Enola, Pa. Erie, Pa. Fort Wayne, Ind.	Greenville, N. J. (3) Indianapolis (Hawthorne), Ind. Jersey City (Harsimus Cove), N. J. (For shipment to or from New York Piers and Jersey City District) Louisville, Ky. Manhattan Produce Yard, N. J. (Reicing only) Philadelphia (52nd Street), Pa. Philadelphia (Washington Ave. Wharf), Pa. Philadelphia (Penna. Prod. Terminal), Pa. Pittsburgh (Produce Yard), Pa. Renovo, Pa. Toledo, Ohio Traverse City, Mich. Wilmington (Edgemoor Yard), Del. Winchester, Va.
---	---

RETOP ICING STATIONS:

Akron, Ohio (1) Altoona, Pa. (1) *Baltimore, Md. (1) Buffalo, N. Y. (1) Canton, Ohio *Chicago, Ill. (1) *Cincinnati, Ohio (1) *Cleveland, Ohio (1) *Columbus, Ohio *Detroit, Mich. (1) Enola, Pa. (4) Harsimus Cove, N. J. (1) Huntingdon, Pa. (4) *Indianapolis, Ind. (1)	*Jersey City, N. J. (1) Johnstown, Pa. (1) *Kearney, N. J.—Manhattan Produce Yard (1) *Newark, N. J.—Penna. Produce Yard (1) New Castle, Pa. (1) New York, N. Y.—*37th Street Station (1); Piers 27, 28 and 29, North River (Car Floats) (1) *Philadelphia, Pa.—Penna. Produce Terminal (1) *Pittsburgh, Pa.—Penna. Produce Terminal (1) Sharon, Pa. (1) Washington, D. C. (Team Tracks only) (1) *Waverly, N. J. (1) Wilkes-Barre, Pa. (1)
---	---

- (*) Snow ice is available.
- (1) Applies only to shipments held in transit or reconsignment or held at final destination.
- (2) Shipments other than fresh meat and frozen commodities arriving on trains PNE-8, CG-8, SW-8 and MD-6 will not be reiced unless delayed, except perishables from Delmarva Division picked up at Edgemoor Yard, Delaware by MD-6 will be serviced in accordance with instructions shown on waybills. In addition, all perishables arriving Greenville on trains PNE-8, CG-8, SW-8 and MD-6 Saturdays and days preceding important holidays will be serviced in accordance with instructions shown on waybills.
- (3) For perishables other than fresh meat and frozen commodities moving on PNE-8, CG-8, SW-8 and MD-6, except shipments from Delmarva Division handled from Edgemoor Yard, Delaware on MD-6.
- (4) For carrier convenience retop icing may be performed at Enola, Pa. in lieu of Huntingdon, Pa., or at Huntingdon, Pa. in lieu of Enola, Pa.

Pennsylvania Railroad Freight Traffic Representatives

Who are anxious to assist in your transportation requirements

	Telephone		Telephone
Akron 8, Ohio.....	M. C. Marquet, District Freight Agent.....	Blackstone 5111	
Albany 7, N. Y.....	L. J. Moran, District Freight Agent.....	4-3770	
Altoona, Pa.....	R. M. Roth, District Freight Agent.....	3-6141	
Atlanta 5, Ga.....	T. F. Lawson, General Southern Freight Agent.....	Walnut 3734	
Baltimore 1, Md.....	D. J. Moynihan, Division Freight Agent.....		
Birmingham 3, Ala.....	H. M. Morton, District Freight Agent.....	7-4523	
Boston 14, Mass.....	H. B. Bovee, New England Freight Agent.....	Lafayette 3-2560	
Buffalo 4, N. Y.....	George Berg, Division Freight Agent.....	Cleveland 5820	
Camden 3, N. J.....	N. B. Fagan, Div. Frt. Agent.....	Woolawn 3-2300—Ext. 211	
Canton 2, Ohio.....	J. M. C. Collins, District Freight Agent.....	8261	
Charlotte 2, N. C.....	F. G. Aspelmeier, District Freight Agent.....	2-4456	
Chicago 6, Ill.....	H. P. Bates, Division Freight Agent.....		
Cincinnati 2, Ohio.....	J. A. Armento, Division Freight Agent.....		
Cleveland 14, Ohio.....	W. M. Hardt, II, Division Freight Agent.....		
Columbus 15, Ohio.....	W. L. Leedy, Division Freight Agent.....	Main 1121	
Dallas 1, Tex.....	Thomas Waters, District Freight Agent.....	Central 9303	
Davenport, Iowa.....	F. J. Fogle, District Freight Agent.....	32913	
Dayton 2, Ohio.....	R. S. Vipond, District Freight Agent.....	Adams 9133	
Denver 2, Colo.....	O. J. Boehm, District Freight Agent.....	Main 4198	
Des Moines 9, Iowa.....	Maurice Lyall, District Freight Agent.....	4-3279	
Detroit 26, Mich.....	M. J. Boylan, Division Freight Agent.....	Woodward 1-6420	
Easton, Pa.....	I. L. Bell, District Freight Agent.....	7168	
Elmira, N. Y.....	George A. Harnischfeger, District Freight Agent.....	8191	
Erie 6, Pa.....	C. C. Kelsey, Division Freight Agent.....	25-631	
Fort Wayne 2, Ind.....	F. G. Schoettler, Division Freight Agent.....	Anthony 6441	
Grand Rapids 2, Mich.....	T. A. McMillen, Division Freight Agent.....	8-1161	
Hagerstown, Md.....	W. J. O'Brien, District Freight Agent.....	1434	
Harrisburg, Pa.....	J. R. Thomas, Division Freight Agent.....	2-4141	
Houston 2, Tex.....	H. A. Rosyneck, District Freight Agent.....	Preston 3117	
Indianapolis 25, Ind.....	W. P. Hammond, Division Freight Agent.....	Riley 9331	
Jacksonville 2, Fla.....	G. H. West, District Freight Agent.....	5-3626	
Jersey City, N. J.....	A. F. Bross, District Freight Agent.....	Henderson 4-6200	
Kansas City 6, Mo.....	H. Dickinson, District Freight Agent.....	Harrison 8080	
Los Angeles 14, Calif.....	E. R. Norris, District Freight Agent.....	Trinity 7793	
Louisville 3, Ky.....	J. A. Sladen, Division Freight Agent.....	Jackson 5112	
Memphis 3, Tenn.....	A. J. Garibaldi, District Freight Agent.....	8-3033	
Mexico City 1, Mex.....	Alfonso Molinar, General Mexican Agent.....	Ericsson 12-33-08	
Milwaukee 2, Wis.....	D. J. Butler, District Freight Agent.....	Daly 8-4850	
Minneapolis 2, Minn.....	W. H. McAtee, District Freight Agent.....	Atlantic 5367	
Montreal 2, Que.....	G. H. Keown, District Freight Agent.....	Belair 3057	
Nashville 3, Tenn.....	D. M. Clark, District Freight Agent.....	6-8234	
Newark 2, N. J.....	C. E. Tinney, District Freight Agent.....	Market 2-4000	
New Haven 10, Conn.....	Ernest L. Wogen, District Freight Agent.....	5-6163	
New Orleans 12, La.....	George F. Berkemer, District Freight Agent.....	Raymond 0477	
New York 1, N. Y.....	J. A. Prince, Division Freight Agent.....		
Peoria 2, Ill.....	F. W. Konze, District Freight Agent.....	4-6161	
Philadelphia 4, Pa.....	C. J. Quinn, Division Frt. Agt.....	598 Penna. Sta., 30th St.	
Phoenix, Ariz.....	T. A. Metzger, District Freight Agent.....	4-1514	
Pittsburgh 22, Pa.....	H. F. Isenberg, Division Freight Agent.....	802 Penna. Sta.	
Portland 4, Ore.....	T. A. Precht, District Freight Agent.....	ATwater 8543	
Portsmouth, Ohio.....	J. H. Cross, Jr., District Freight Agent.....	2050	
Reading, Pa.....	L. S. Weber, District Freight Agent.....	2-6251	
Richmond, Ind.....	W. S. Wilson, Jr., District Freight Agent.....	2-4651	
Rochester, N. Y.....	E. E. Allison, District Freight Agent.....	Locust 9220 or 9229	
St. Louis 1, Mo.....	R. D. Clemens, Division Freight Agent.....		
San Antonio 5, Tex.....	I. H. DeGette, District Freight Agent.....	Fannin 8021	
San Francisco 5, Cal.....	J. E. Little, District Freight Agent.....	GARfield 1-5044	
Scranton 3, Pa.....	L. O. Holt, District Freight Agent.....	5792	
Seattle 1, Wash.....	W. G. Smith, District Freight Agent.....	ELliott 8590	
South Bend 21, Ind.....	Theodore W. Hoke, District Freight Agent.....	6-2483	
Terre Haute, Ind.....	O. B. Peterson, District Freight Agent.....	Crawford 1371	
Toledo 4, Ohio.....	J. A. Flood, Division Freight Agent.....	Adams 5181	
Toronto 1, Ont.....	S. S. Salter, Canadian Freight Agent.....	ELgin 7229	
Trenton 8, N. J.....	C. A. Fritzson, District Freight Agent.....	2-7191	
Tulsa 3, Okla.....	R. R. Jacoby, District Freight Agent.....	3-2662	
Uniontown, Pa.....	C. E. Miller, Division Freight Agent.....	88561	
Washington 5, D. C.....	D. T. Connors, District Freight Agent.....	Executive 6600	
Wheeling, W. Va.....	J. V. Fackler, District Freight Agent.....	850 or 651	
Williamsport 11, Pa.....	F. B. Vandergrift, Division Freight Agent.....	4141	
Wilmington 50, Del.....	K. G. Crowl, Division Freight Agent.....	5-4483	
Winston-Salem 3, N.C.....	H. L. Gordon, District Freight Agent.....	8640	
York, Pa.....	J. F. Mann, Freight Representative.....	5758	
Youngstown 3, Ohio.....	J. Lindquist, Division Freight Agent.....	7-1492	
Zanesville, Ohio.....	A. W. Lenhard, District Freight Agent.....	Main 193	

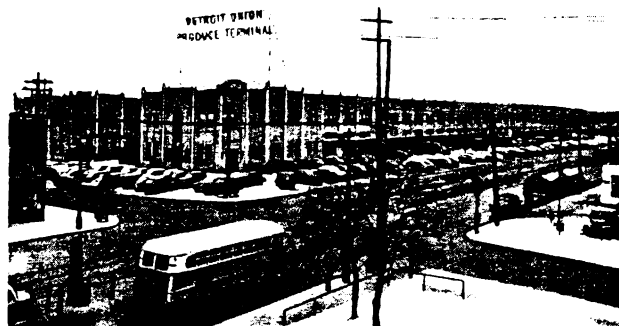
London E. C. 3, England, Ashton C. Bonnafton. General European Agent, 88 Leadenhall St., Telephone Avenue 1894.



The Pennsylvania's giant streamlined electric locomotives move perishables swiftly to market along the Atlantic Seaboard.

Produce Terminals...

These and others serve
Pennsylvania Railroad Shippers



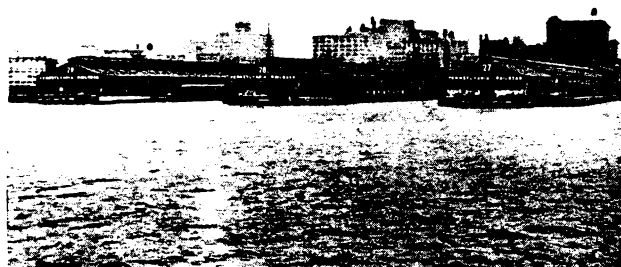
DETROIT



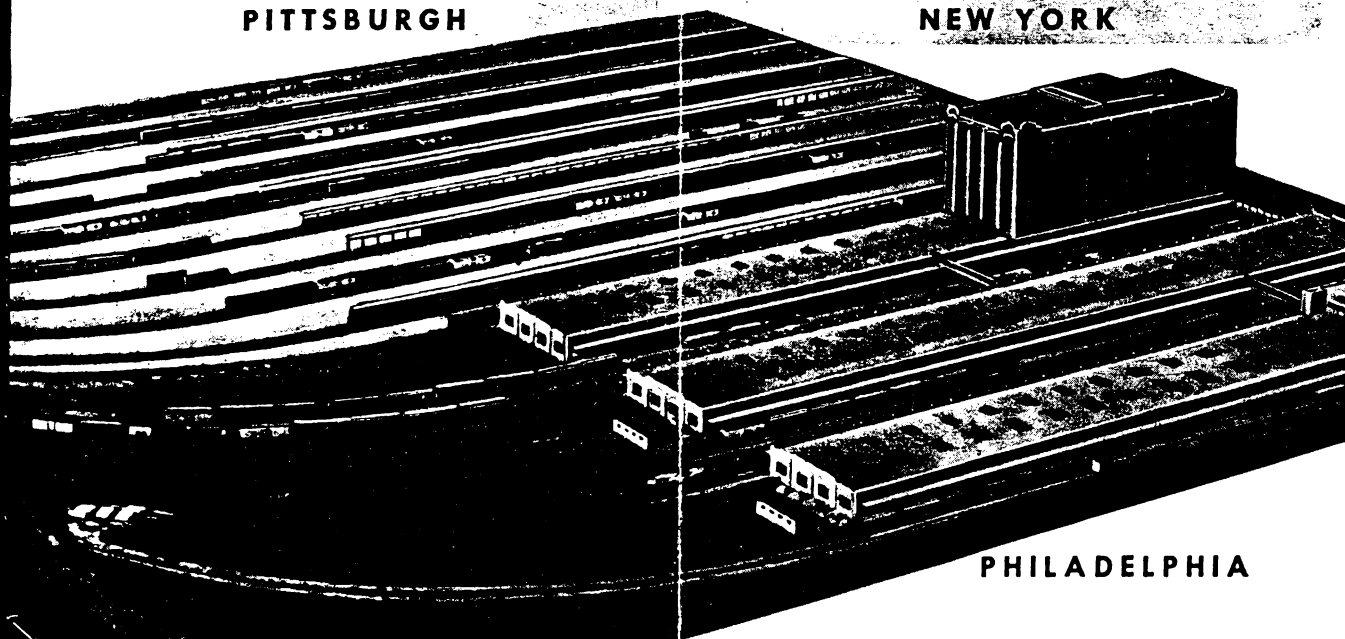
BALTIMORE



PITTSBURGH



NEW YORK



PHILADELPHIA